



# Political Studies Association

PSA Media Briefing

*English Local Elections Update*

Tuesday 5th April 2016

**Professor Colin Rallings (University of Plymouth)**

Phone: 01752 585 826 / Email: [C.Rallings@plymouth.ac.uk](mailto:C.Rallings@plymouth.ac.uk)

**Professor Michael Thrasher (University of Plymouth)**

Phone: 01752 585 840 / Email: [M.Thrasher@plymouth.ac.uk](mailto:M.Thrasher@plymouth.ac.uk)

**Professor Matthew Goodwin (University of Kent)**

Phone: 07929 045 857 / Email: [m.j.goodwin@kent.ac.uk](mailto:m.j.goodwin@kent.ac.uk)

Tel: 020 7321 2545

Email: [helena.djurkovic@psa.ac.uk](mailto:helena.djurkovic@psa.ac.uk)  
[stefanie.mair@psa.ac.uk](mailto:stefanie.mair@psa.ac.uk)  
[danielle.bailey@psa.ac.uk](mailto:danielle.bailey@psa.ac.uk)  
[josh.niderost@psa.ac.uk](mailto:josh.niderost@psa.ac.uk)





# **Political Studies Association**

PSA Media Briefing

Tuesday 5<sup>th</sup> April 2016

**Colin Rallings and Michael Thrasher,  
Professors of Politics, Elections Centre,  
University of Plymouth**

Colin Rallings:

Phone: 01752 585 826

Email: [C.Rallings@plymouth.ac.uk](mailto:C.Rallings@plymouth.ac.uk)

Michael Thrasher:

Phone: 01752 585 840

Email: [M.Thrasher@plymouth.ac.uk](mailto:M.Thrasher@plymouth.ac.uk)

# The English Local Elections 2016

Professor Colin Rallings and Professor Michael Thrasher,  
Elections Centre, University of Plymouth

[www.electionscentre.co.uk](http://www.electionscentre.co.uk)

[crallings@plymouth.ac.uk](mailto:crallings@plymouth.ac.uk)

[mthrasher@plymouth.ac.uk](mailto:mthrasher@plymouth.ac.uk)

## Local elections 2016

**Metropolitan boroughs – a third of seats (724 in total) in 32 councils; all seats (192) in three councils (two following boundary changes). No elections in Doncaster.**

	Con	Lab	LD	Green	UKIP	Other	No overall control
Current control	2	29	-	-	-	-	4
Seats being defended*	104	680	80	12	16	24	-

\*accounting for boundary changes

**Unitary authorities – a third of seats (271 in total) in 16 councils; all seats (188) in three councils following boundary changes.**

	Con	Lab	LD	Green	UKIP	Other	No overall control
Current control	3	9	-	-	-	-	7
Seats being defended*	129	239	52	15	6	18	-

\*accounting for boundary changes

**District councils – a third of seats (737 in total) in 51 councils; a half of seats (124) in seven councils; all seats (507) in 12 councils following boundary changes.**

	Con	Lab	LD	Green	UKIP	Other	No overall control
Current control	36	20	3	-	-	-	11
Seats being defended*	649	418	199	21	6	75	-

\*accounting for boundary changes

## TOTAL – 2743 seats in 124 councils

	Con	Lab	LD	Green	UKIP	Other	No overall control
Current control	41	58	3	-	-	-	22
Seats being defended*	882	1337	331	48	28	117	-

\*accounting for boundary changes

## Mayoral elections

London (Con); Bristol (Ind); Liverpool (Lab); Salford (Lab)

## National equivalent vote at local elections 2008-15

	<b>Con</b>	<b>Lab</b>	<b>LD</b>	<b>Oth</b>	
2008	43	24	23	10	
2009	35	22	25	18	
2010	35	28	25	12	
2011	38	37	16	9	
2012	33	39	15	13	<b>UKIP</b>
2013	26	29	13	10	22
2014	30	31	11	10	18
2015	36	32	10	10	12

## Local election results (seats) at this phase of cycle 2004-12, 2014

	<b>Con</b>	<b>Lab</b>	<b>LD</b>	<b>Ind/Oth</b>	
2004*	1241	981	737	222	
2008	1300	680	651	209	
2012	786	1189	288	149	
				<b>UKIP</b>	<b>Ind/Oth</b>
(2014*	754	1064	313	151	129)

\*adjusted for all out elections in the metropolitan boroughs 2004; excluding London 2014)

## **PCC elections 2016**

41 contests – 37 in England; 4 in Wales

### **November 2012 results**

#### **England - 15.1% turnout**

Seats

Con 15; Lab 12; Ind 10

First preference % share

Con 28.2; **Lab 31.5**; LD 7.7; UKIP 7.4; Ind/Oth 25.2

#### **Wales - 15.4% turnout**

Seats

Con 1; Lab 1; Ind 2

First preference % share

Con 20.9; **Lab 42.1**; LD -; UKIP 1.8; Ind/Oth 35.3

### **Places to watch:**

Avon & Somerset – Ind 30% over Con

Bedford – Lab 6% over Con

Cambridgeshire – Con 11% over Lab

Cumbria – Con 11% over Lab

Dyfed/Powys – Con 2% over Lab

Essex – Con 3% over Ind

Gloucestershire – Ind 6% over Con

Gwent – Ind 9% over Lab

Hampshire – Ind 10% over Con

Humberside – Con 3% over Lab

Kent – Ind 30% over Con

Lancashire – Lab 4% over Con

Leicestershire – Con 11% over Lab

Lincolnshire – Ind 5% over Ind

Norfolk – Ind 4% over Con

Staffordshire – Con 4% over Lab

Suffolk – Con 3% over Lab

Surrey – Ind 8% over Con

Warwickshire – Ind 14% over Lab

West Mercia – Ind 14% over Con

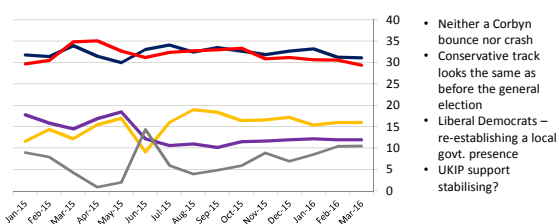
## English Local Elections 2016

(oh, and those Police thingies)

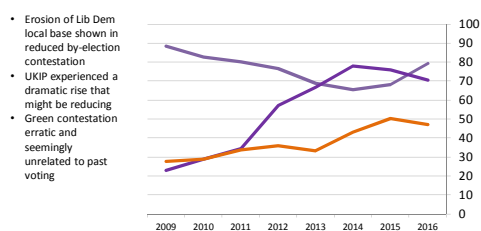
Colin Rallings & Michael Thrasher  
The Elections Centre  
Plymouth University

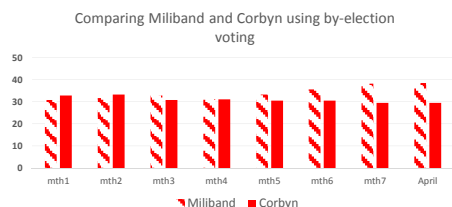
[www.electionscentre.co.uk](http://www.electionscentre.co.uk)

By-election model since 2015



Party contestation in by-elections since 2009






---

---

---

---

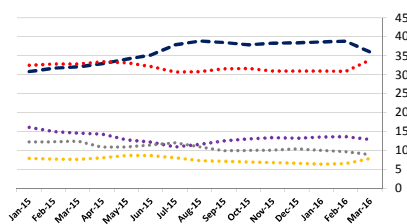
---

---

---

---

Poll of polls since January 2015



Polling data kindly supplied by Professor Will Jennings, University of Southampton.  
Weighted moving quarterly averages.

---

---

---

---

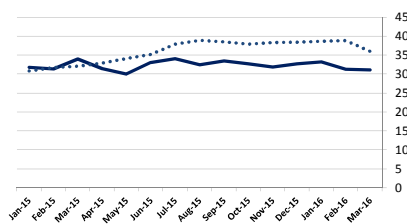
---

---

---

---

Conservative support in by-elections & polls




---

---

---

---

---

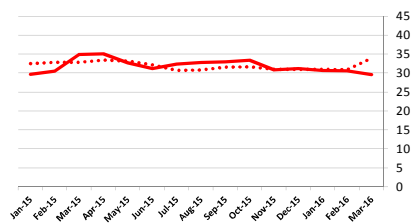
---

---

---



Labour support in by-elections & polls




---

---

---

---

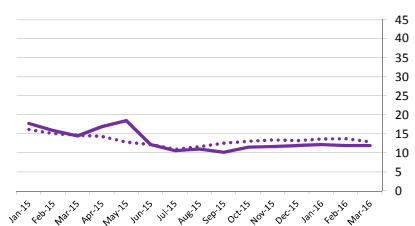
---

---

---

---

UKIP support in by-elections & polls




---

---

---

---

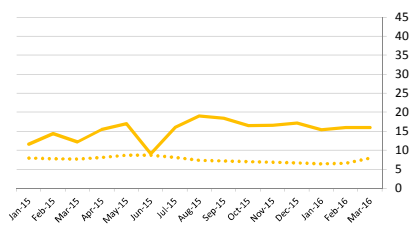
---

---

---

---

Lib Dem support in by-elections & polls




---

---

---

---

---

---

---

---

### Prospects for 2016

---

---

---

---

---

---

---

### Political control in councils up in 2016

	Con	Lab	LD	NOC
Met Boroughs	2	29	-	4
Unitary councils	3	9	-	7
Shire Districts	36	20	3	11
<b>Total</b>	<b>41</b>	<b>58</b>	<b>3</b>	<b>22</b>

---

---

---

---

---

---

---

### Seats up in 2016\*

	Con	Lab	LD	Green	UKIP	Ind/Oth
Met Boroughs	104	680	80	12	16	24
Unitary councils	129	239	52	15	6	18
Shire Districts	649	418	199	21	6	75
<b>Total</b>	<b>882</b>	<b>1,337</b>	<b>331</b>	<b>48</b>	<b>28</b>	<b>117</b>

\* allowing for boundary changes but not by-elections

---

---

---

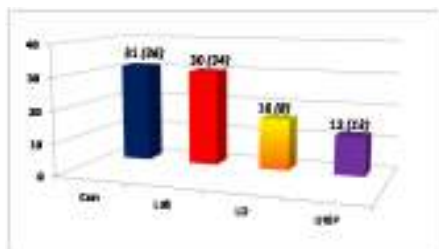
---

---

---

---

## National Equivalent Vote 'forecast' 2016



Figures in brackets are polling averages for March 2016

## Change on 2012

	Con	Lab	LD	UKIP	Ind/Oth
	%	%	%	%	%
2012 National Equivalent Vote	33	39	15	5	8
2016 by-election model 'forecast'	31	30	16	12	11
Change 2012-16	-2	-9	+1	+7	+3

## Previous results

\*adjusted for Mets 2004; London 2014

	Con	Lab	LD	UKIP	Ind/Oth
2004*	1241	981	737	-	222
2008	1300	680	651	4	205
2012	786	1189	288	7	142
(2014*)	754	1064	313	151	129

## Possible 2016 seat changes

Con	Lab	LD	UKIP
+50	-150	+40	+40

---

---

---

---

---

---

---

## UKIP local 'hot spots'

Council	2013 share %	2013 seats	2014 share %	2014 seats	2015 share %	2015 seats
<i>Met Boroughs</i>						
Dudley	-	-	32.4	7/24	23.1	0/24
Rotherham	-	-	44.3	10/21	35.1	3/22
<i>Unitary councils</i>						
N.E. Lincolnshire	-	-	35.5	7/15	25.6	1/16
Plymouth	-	-	31.1	3/19	19.9	0/19
Thurrock	-	-	39.0	5/16	36.3	7/16
<i>Shire districts</i>						
Basildon	32.2	3/9	39.0	10/14	28.4	2/14
Cannock Chase	25.2	0/7	33.5	4/13	20.8	0/15
Castle Point	33.7	2/5	26.9	5/14	20.1	0/14
Eastleigh	33.1	3/7	25.8	0/15	18.2	0/14
Great Yarmouth	36.4	5/9	40.9	10/13	25.8	0/13
Harlow	28.3	0/3	34.0	4/11	20.7	0/12
Huntingdonshire	34.0	6/19	31.4	3/17	18.4	0/18

---

---

---

---

---

---

---

## Possible council change 2016

Cannock Chase	NOC ex Lab
Crawley	Con ex Lab
Kirklees	Lab ex NOC
Three Rivers	Con ex NOC
Trafford	NOC ex Con
...and watch	
Bristol	New boundaries/mayor
Thurrock	UKIP's best shot?

---

---

---

---

---

---

---

### Police & Crime Commissioner elections

- Second cycle
- Elected using Supplementary Vote
- 37 areas in England; 4 in Wales
- November 2012 turnout = 15.1%

---

---

---

---

---

---

---

### Outcomes in 2012

	Con	Lab	LD	UKIP	Ind/Oth
ENGLAND					
Elected	15	12	-	-	10
Vote share	28.2	31.5	7.7	7.4	25.2
WALES					
Elected	1	1	-	-	2
Vote share	20.9	42.1	-	1.8	35.3

---

---

---

---

---

---

---

### Some places to watch

- Dyfed/Powys – Con 2% over Lab
- Humberside – Con 3% over Lab
- Staffordshire – Con 4% over Lab
- Lancashire – Lab 4% over Con
- Kent – Ind 30% over Con
- Lincolnshire – Ind 5% over Ind
- Norfolk – Ind 4% over Con

---

---

---

---

---

---

---



**Political Studies**  
Association

PSA Media Briefing

Tuesday 5<sup>th</sup> April 2016

**Matthew Goodwin, Professor of Politics  
and International Relations, University of  
Kent**

Matthew Goodwin:

Phone: 07929 045 857

Email: [m.j.goodwin@kent.ac.uk](mailto:m.j.goodwin@kent.ac.uk)

## PSA Briefing – UKIP & May Elections

Professor Matthew Goodwin

@GoodwinMJ

---

---

---

---

---

---

---

---

### UKIP – a party at a crossroads

- Investing heavily in EU referendum
- Embedded in Leave.EU and GO! campaigns
- Avoidance of domestic elections shaped by:
  - Oldham parliamentary by-election (23%) – distant 2<sup>nd</sup>
  - Lack of money and manpower, declining membership
  - Absence of trained and experienced grassroots campaigners
- Discussions of starting new, Beppe-Grillo style movement
- Shaped by assumption of small Remain win 50-55%
- Delegation of power to members, professional campaigns

---

---

---

---

---

---

---

---

Change in UKIP vote share lastly by-elections June 2015–April early 2016




---

---

---

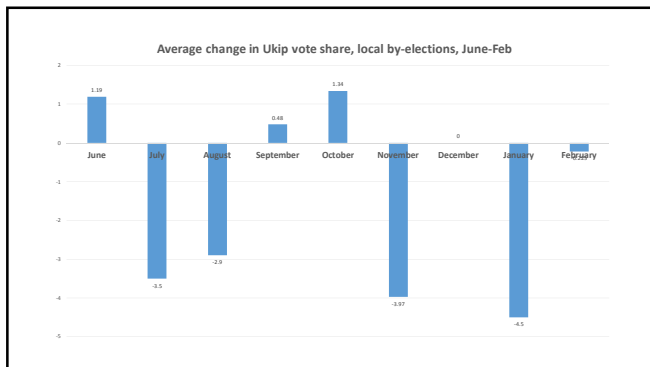
---

---

---

---

---




---

---

---

---

---

---

---

---

### Where could Ukip regain momentum?

- Rotherham (whole council)
- Dudley (one third)
- Gateshead (one third)
- South Tyneside (one third)
- Sunderland (one third)
- Plymouth & Portsmouth (one third)
- Thurrock (one third)
- Eastleigh (one third)
- Great Yarmouth (one third)
- But internally more effort being devoted to Wales...

---

---

---

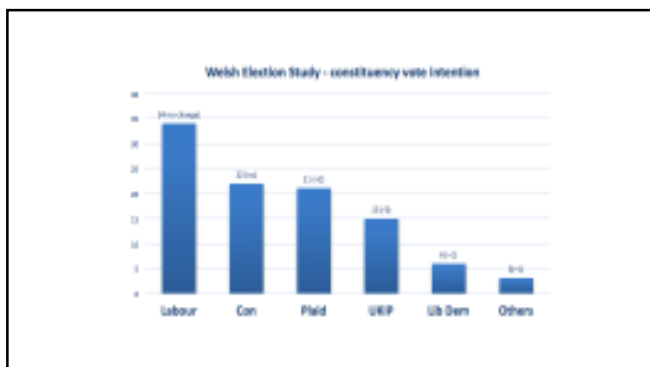
---

---

---

---

---




---

---

---

---

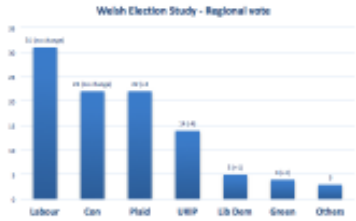
---

---

---

---





UKIP projected to win 7 seats  
2 North Wales, 2 Mid & West, 1 South Wales West, 1 South Wales Central, 1 South Wales East  
Though decline in support suggests that recent infighting may have impacted on campaign/chances

---

---

---

---

---

---

---

---