

Political Studies Association

The Local Elections Media Briefing

Wednesday 24th April

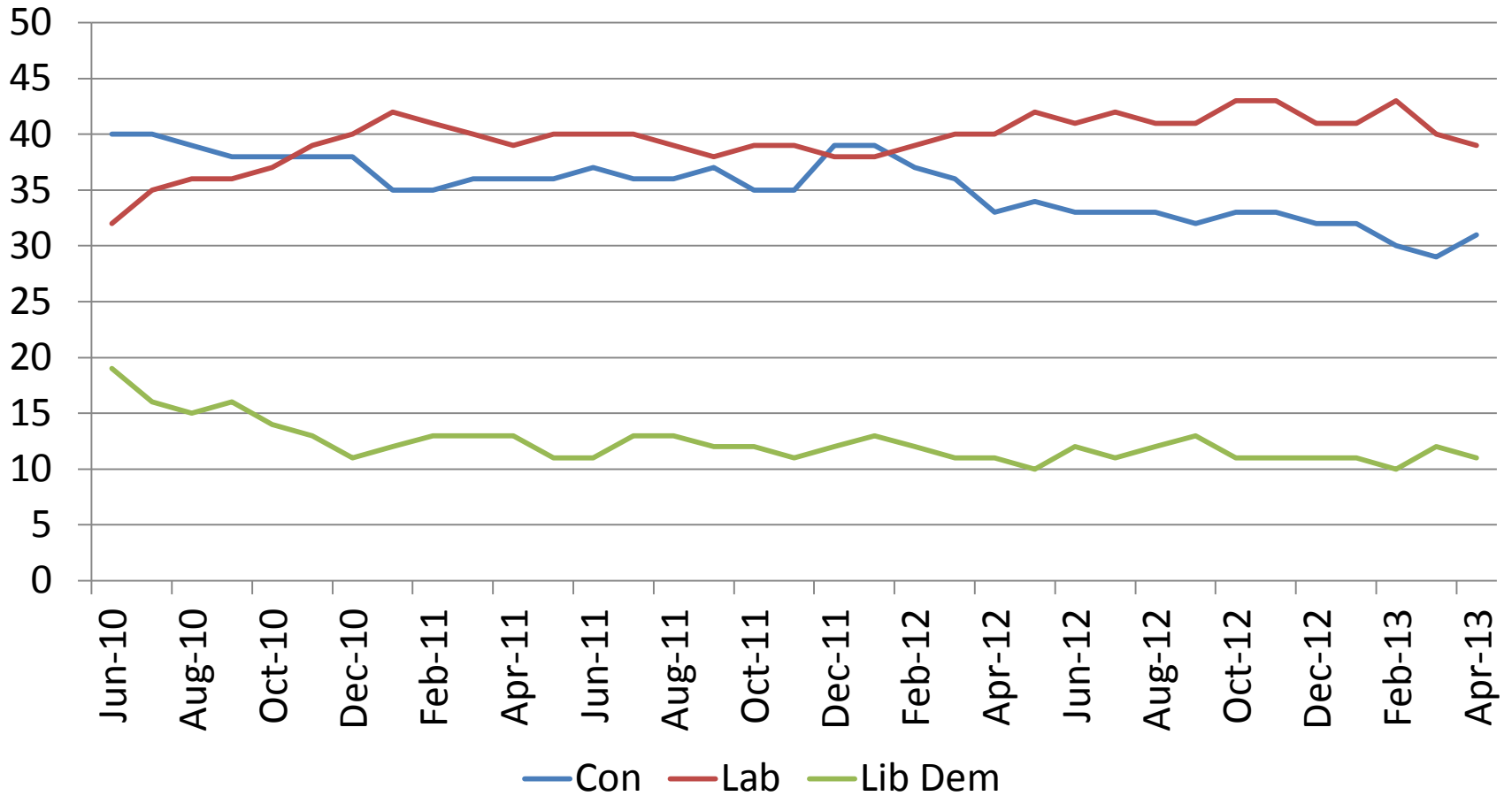
The Political Landscape

John Curtice

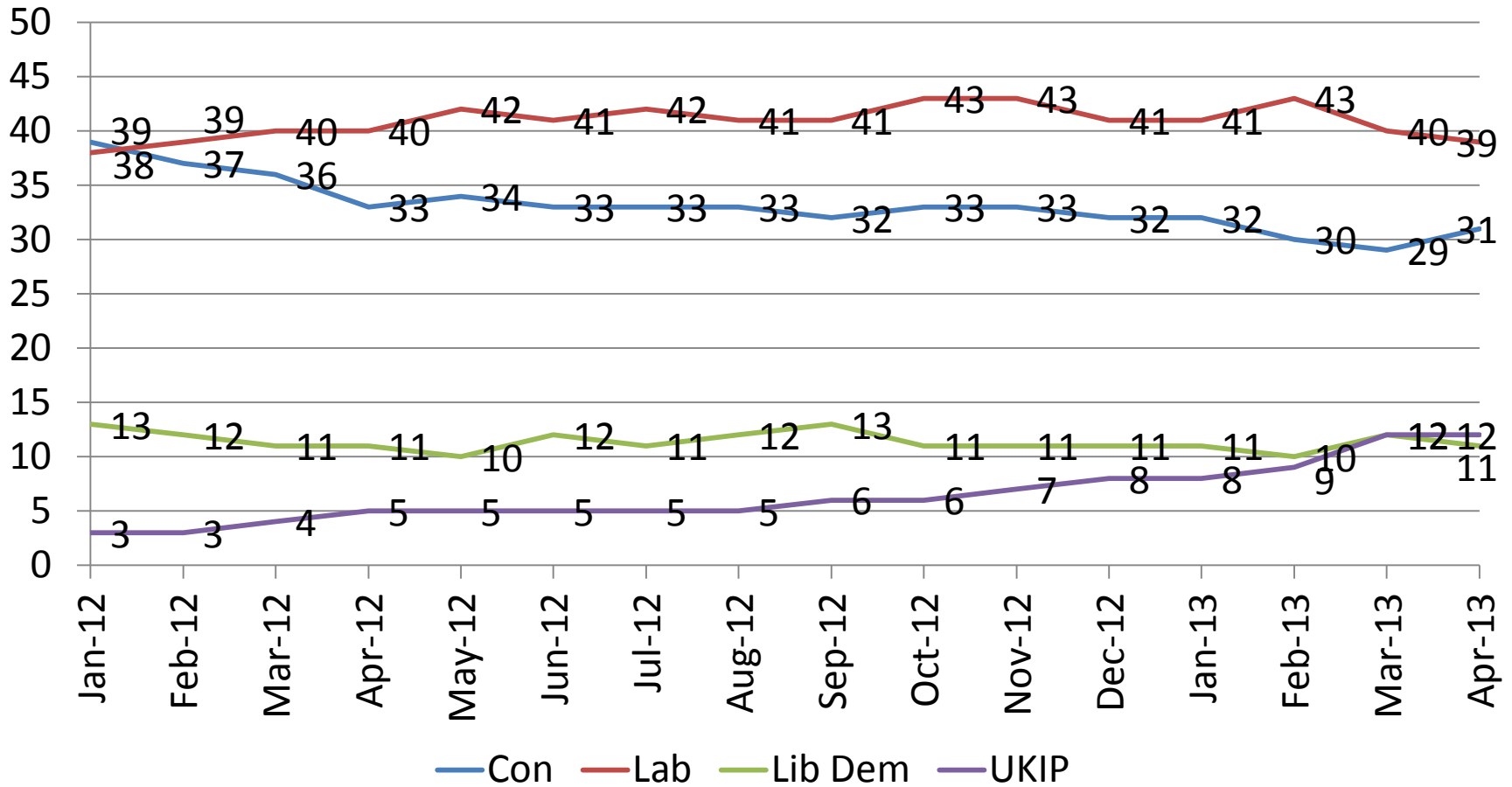
The Structure

- The Rise of UKIP
- Tory troubles
- Liberal Democrat losses (briefly)
- Labour's strength and weaknesses
- Scotland (briefly)

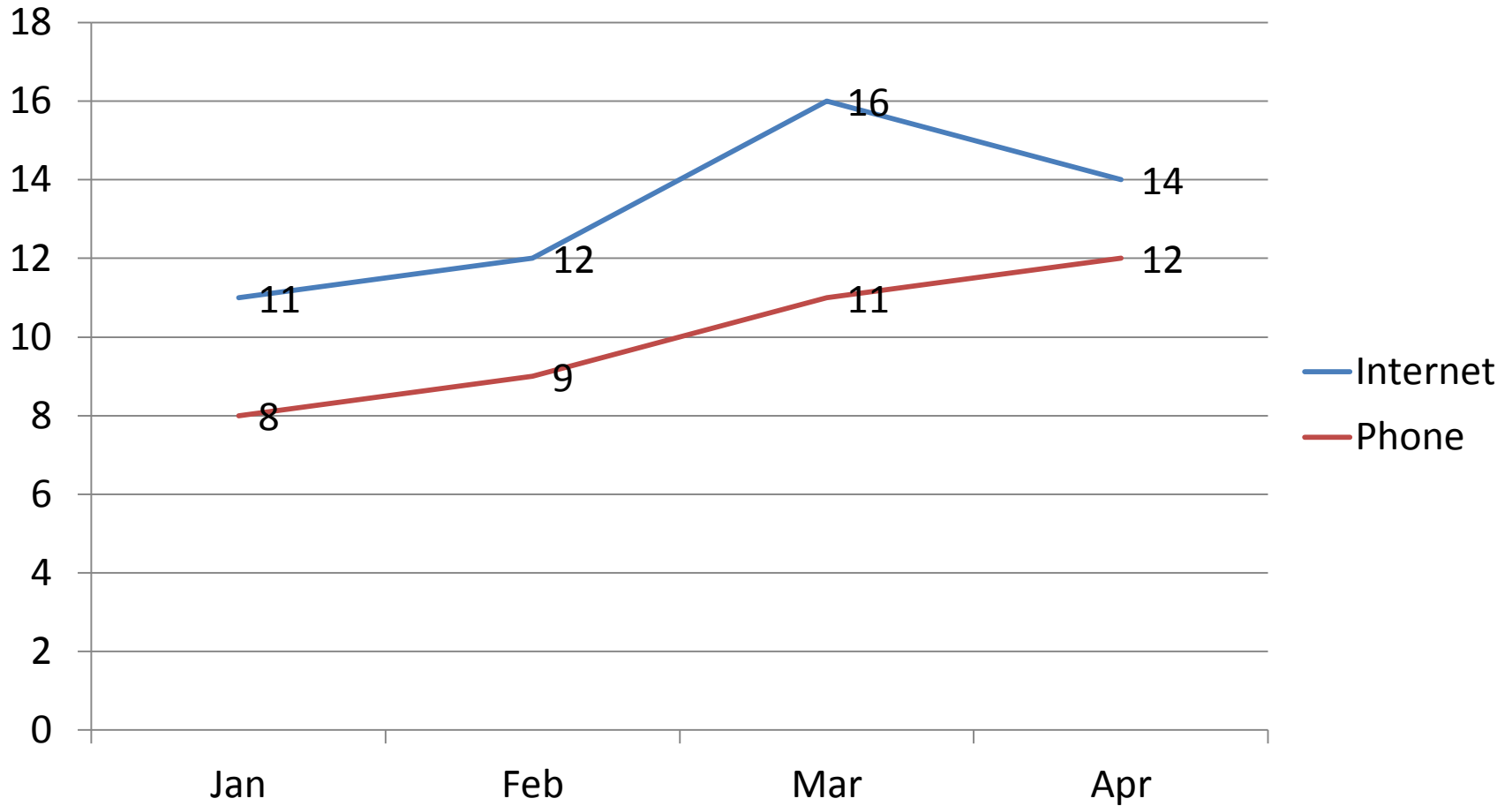
Party Fortunes in This Parliament



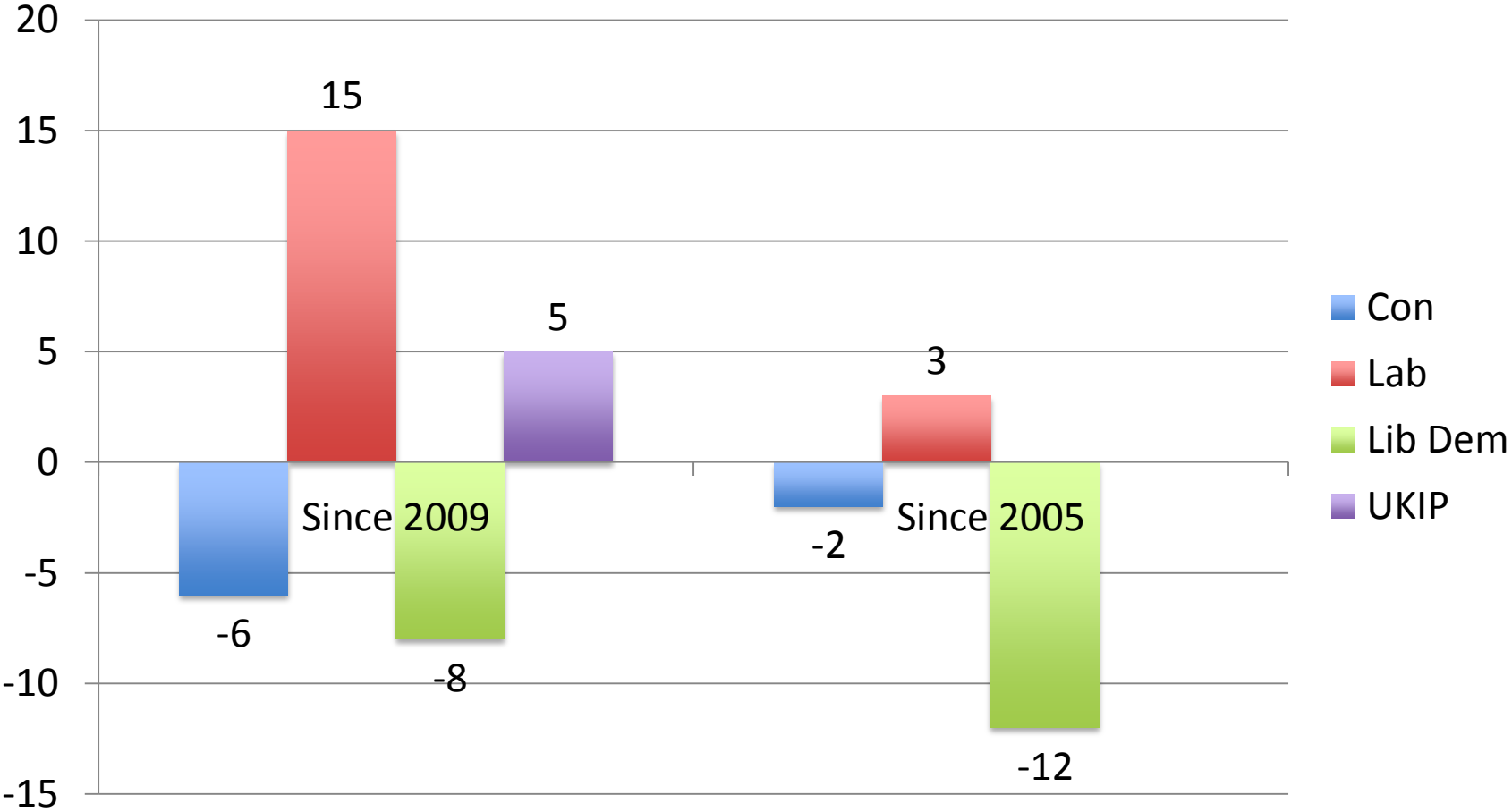
The Rise and Impact of UKIP



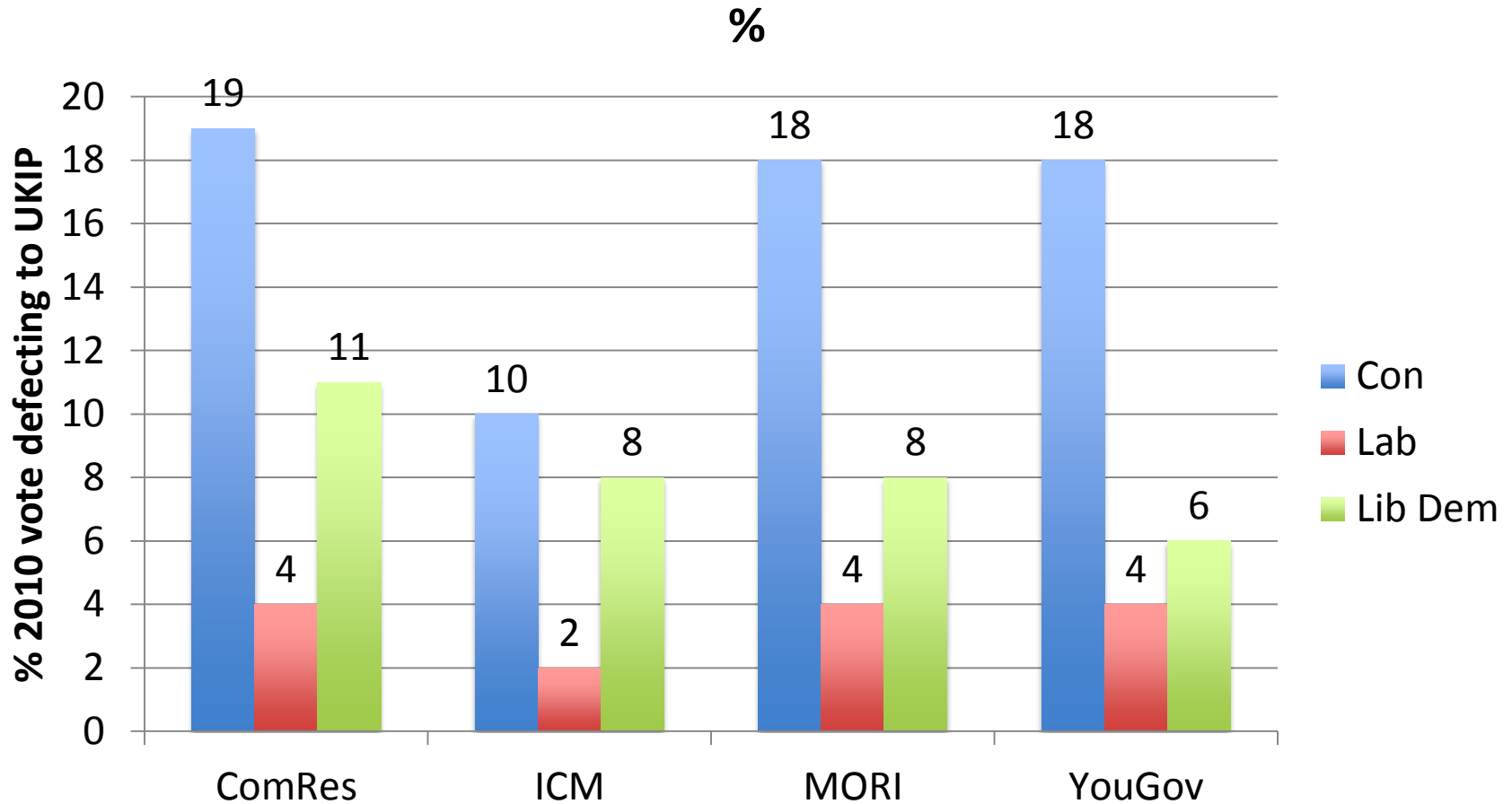
UKIP – Mode Matters (to a Degree)



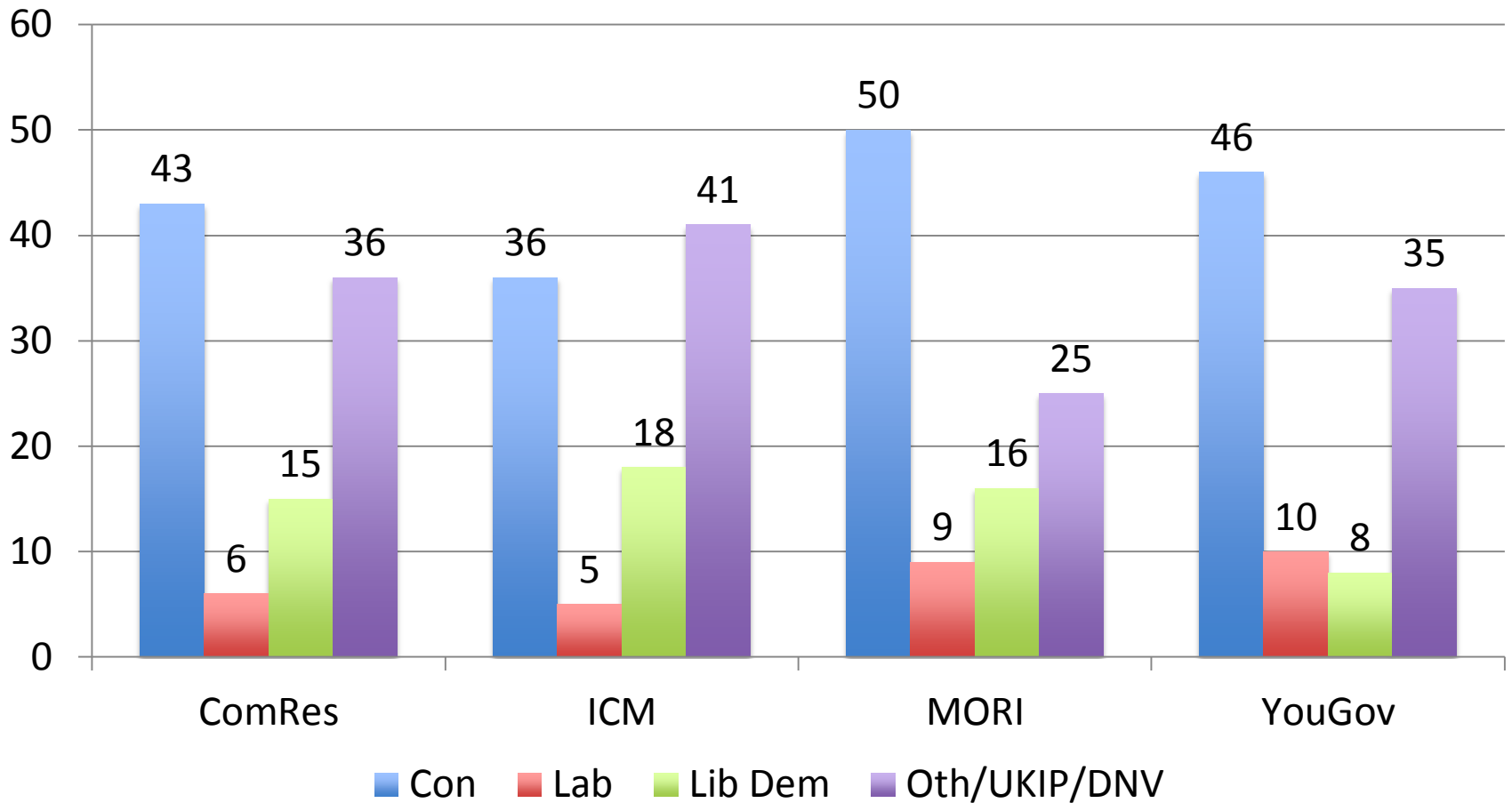
How the Popularity Stakes Differ Now



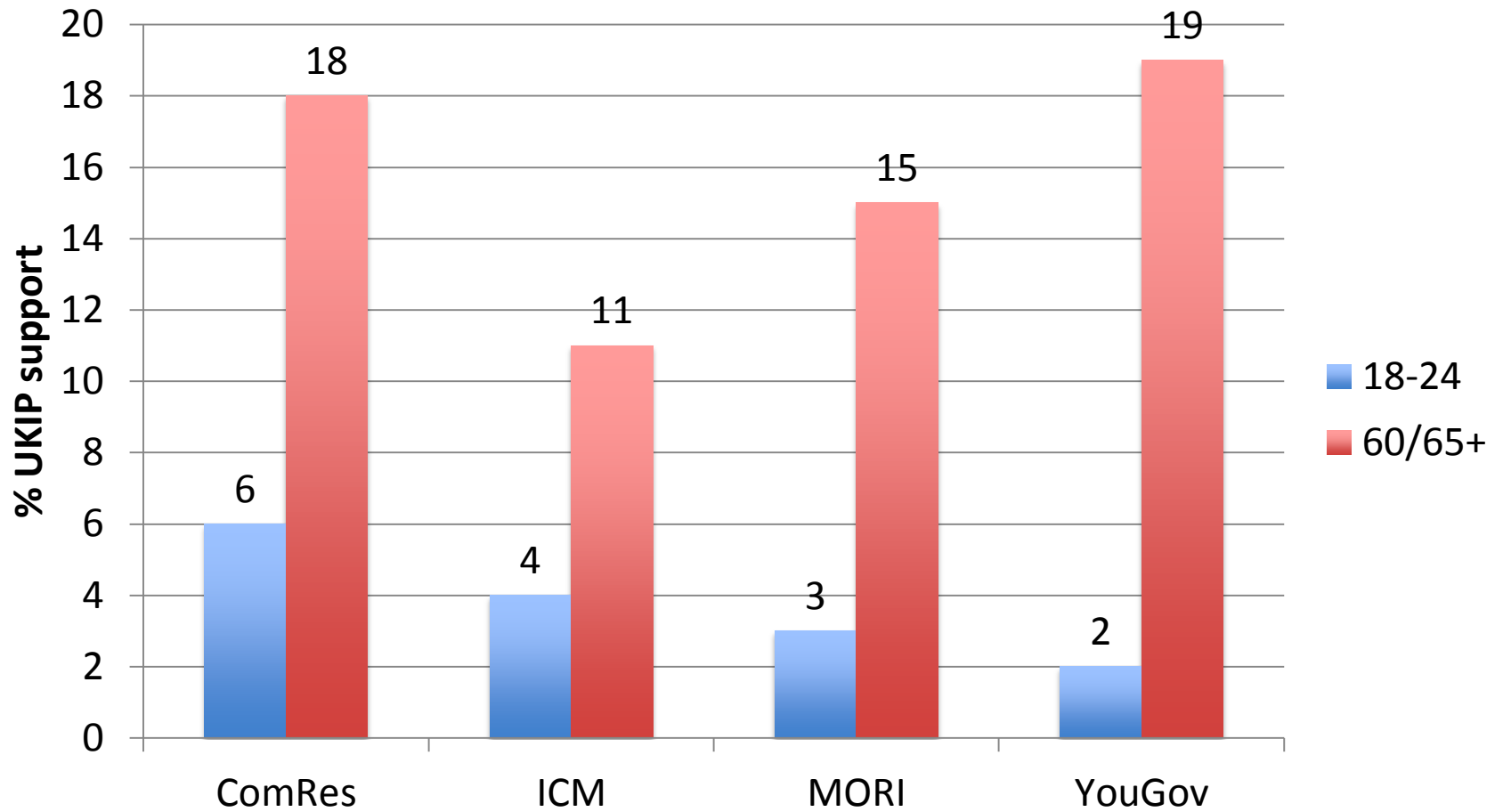
UKIP hurting the Tories most



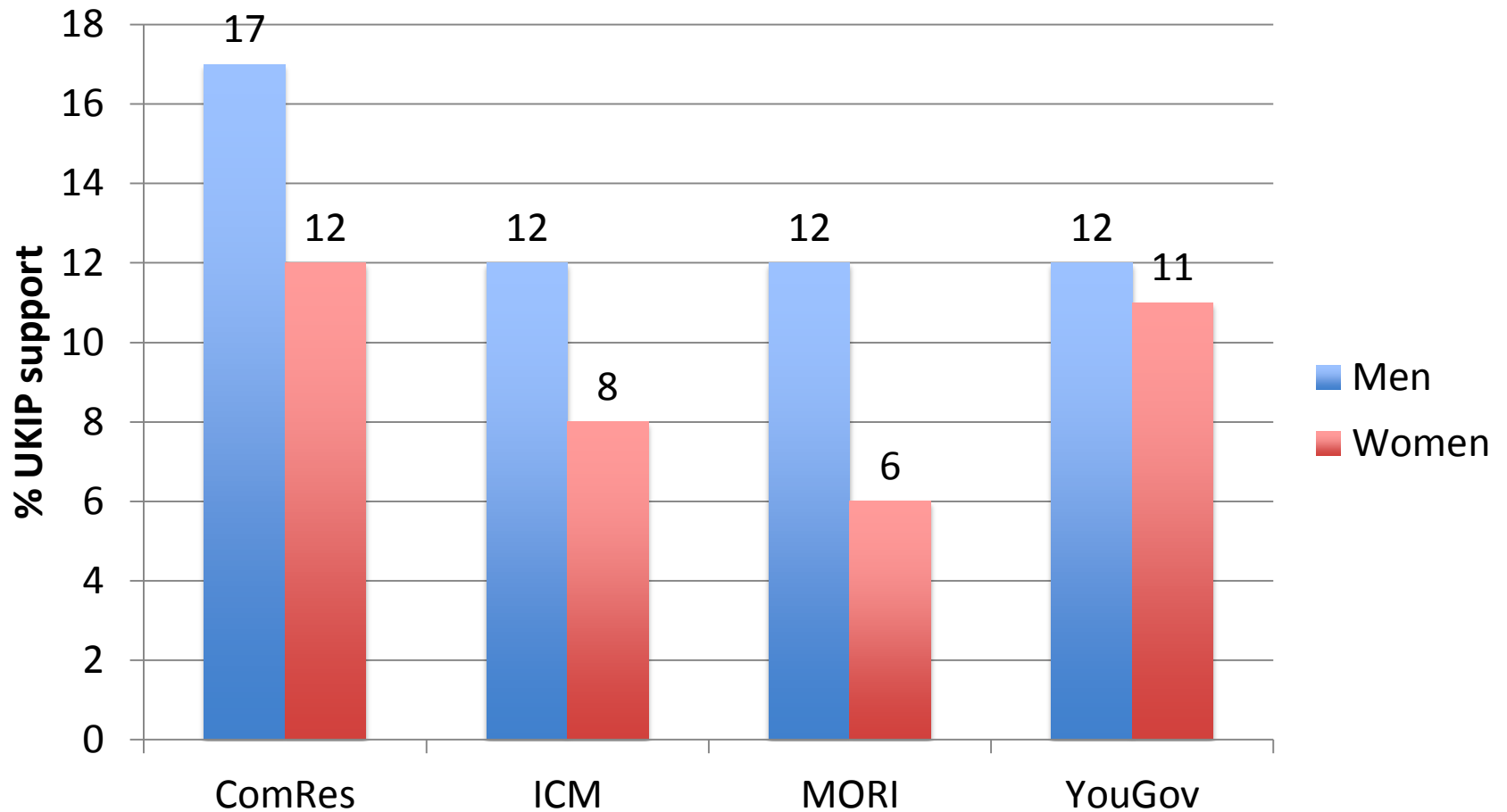
Sources of UKIP Support



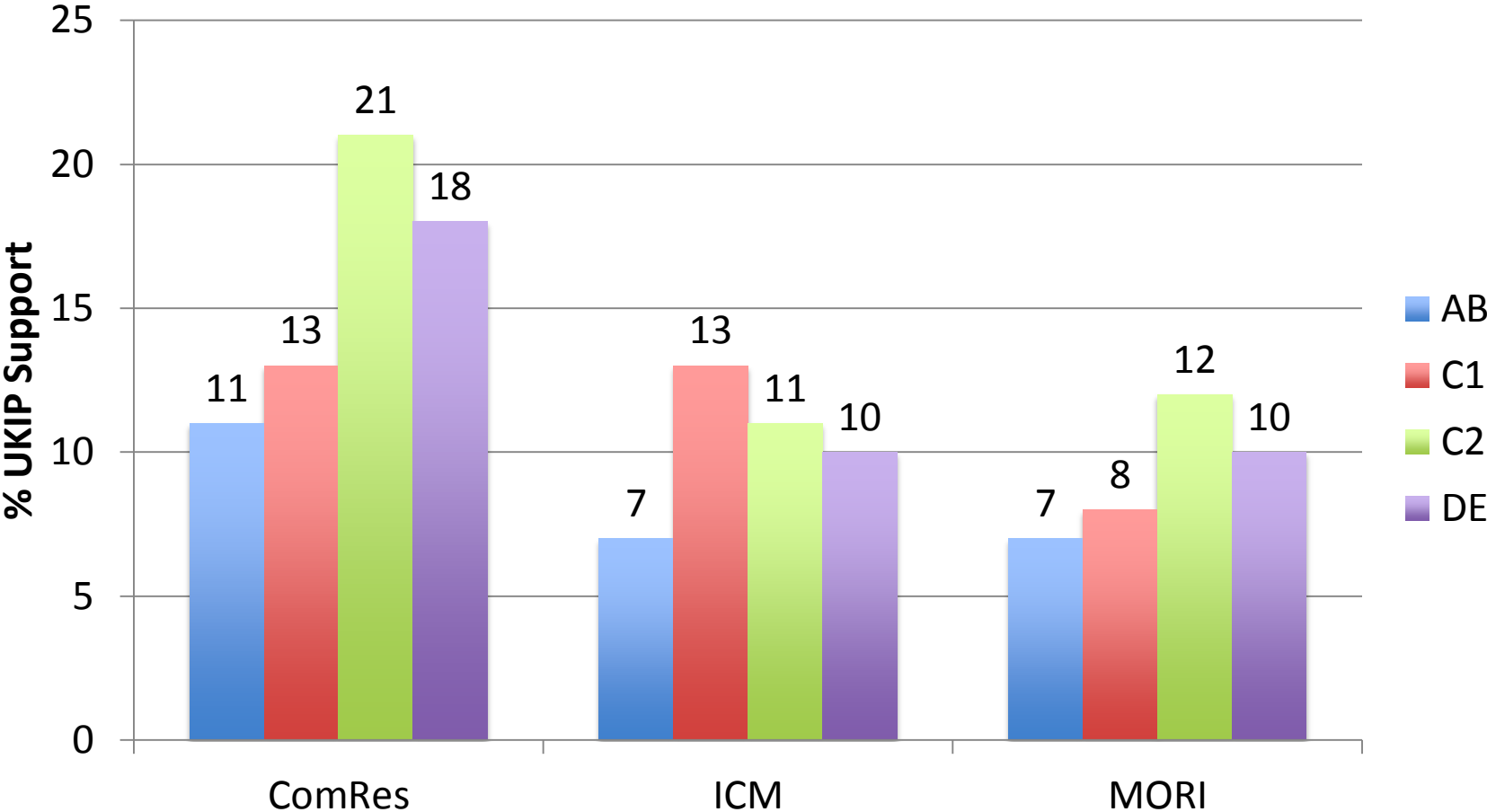
The Age Gap



The Gender Difference

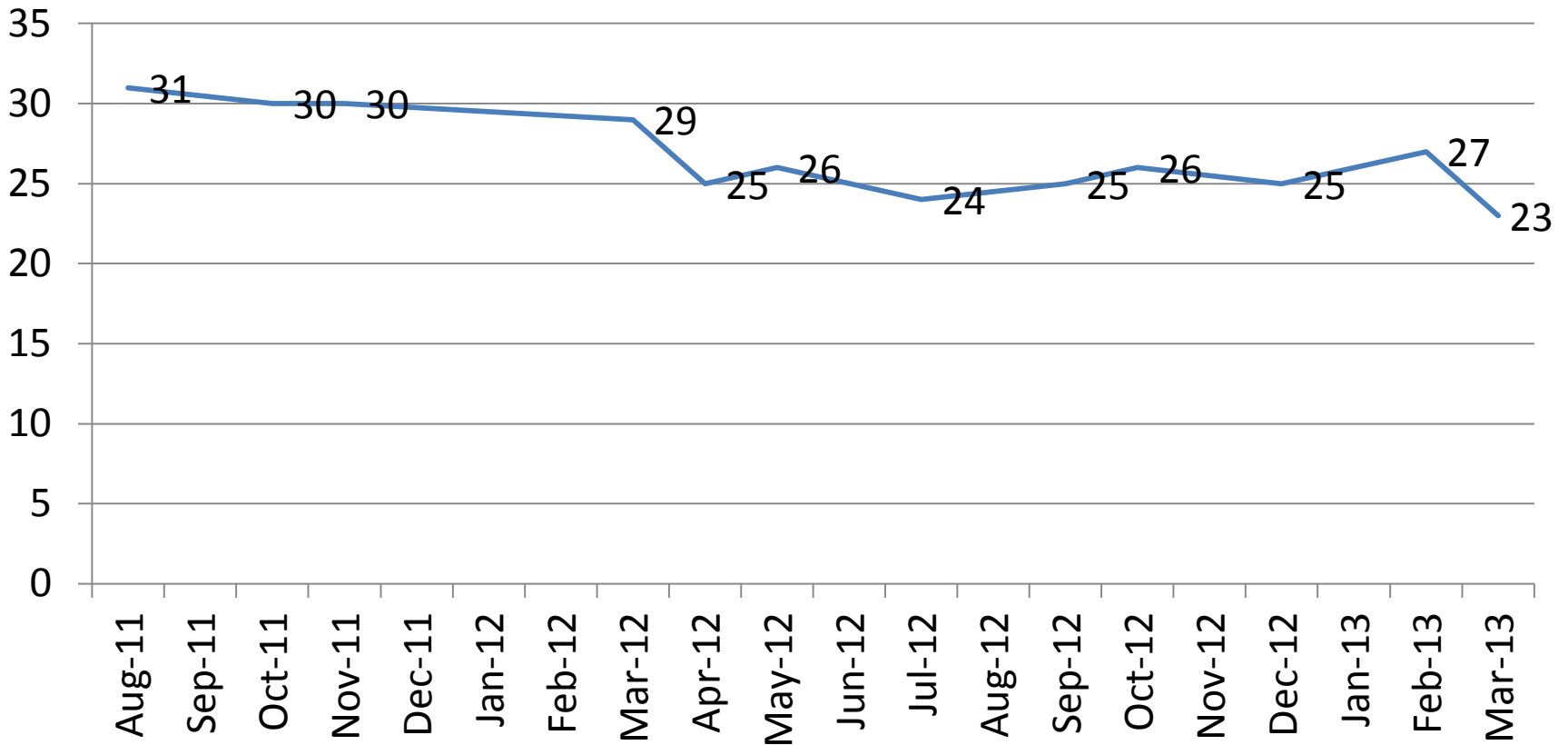


The Social Profile



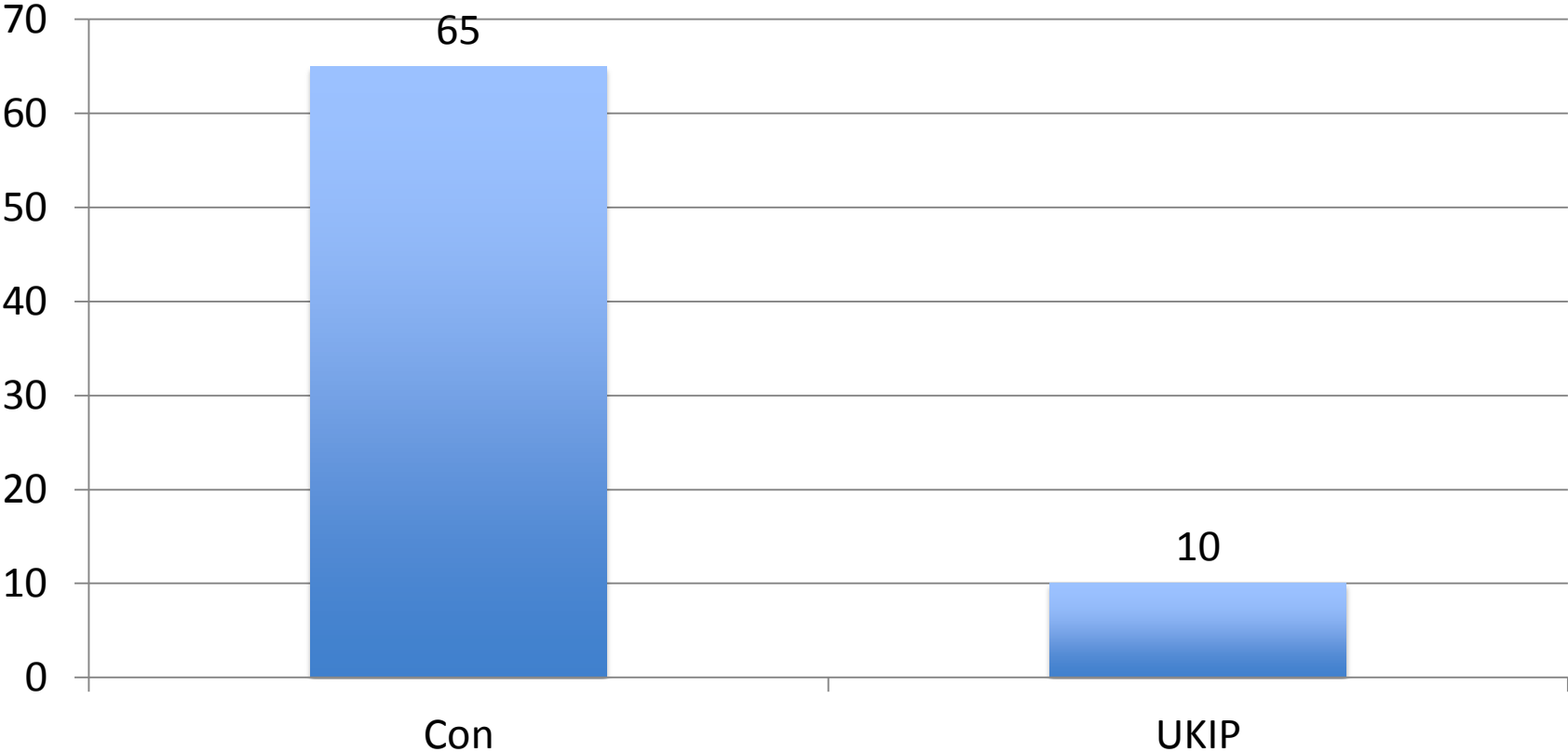
The Initial Trigger?

Trust Cameron/Osborne to run economy



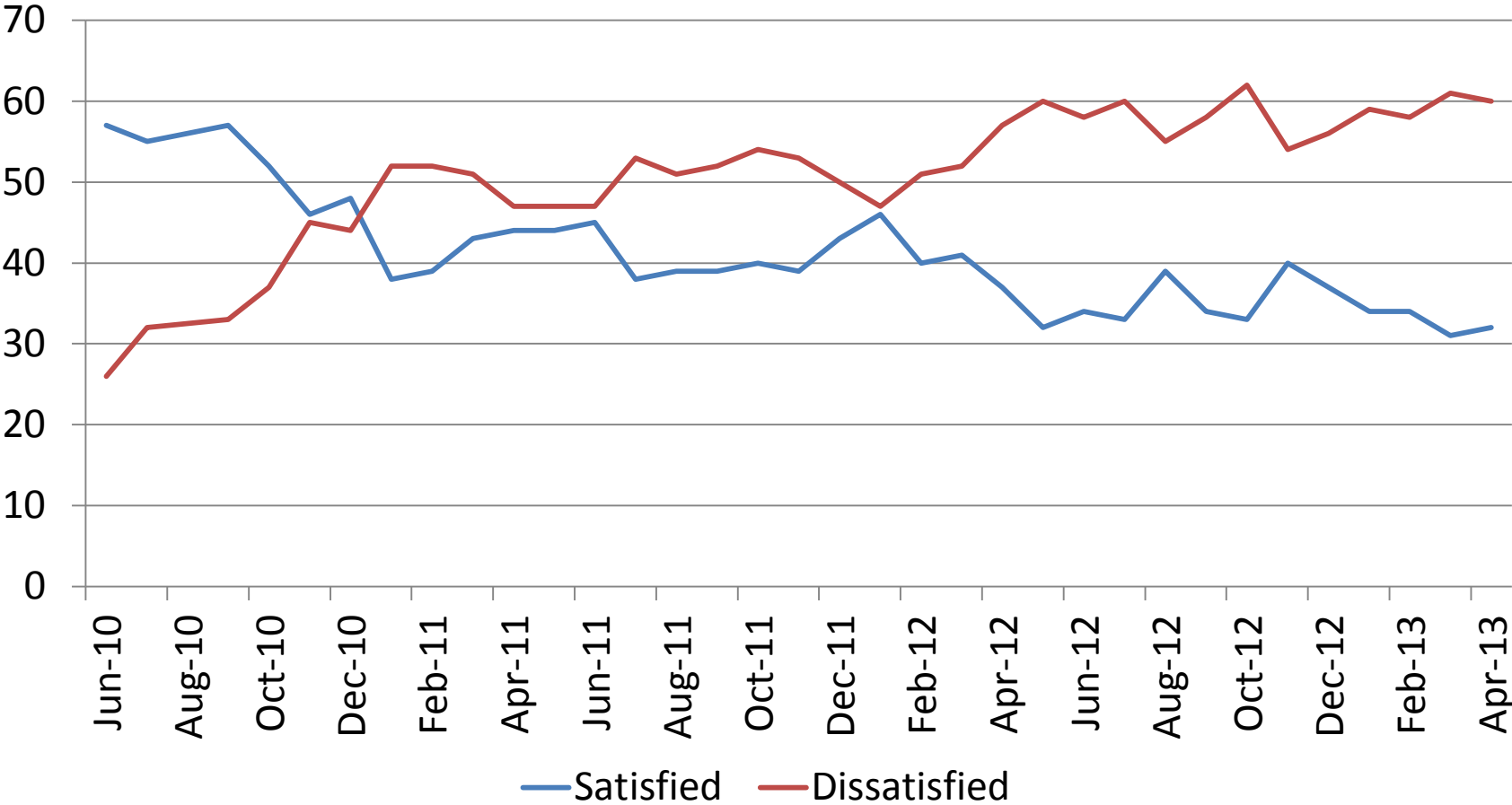
The UKIP-Tory Contrast on Trust

% trust Cameron/Osborne



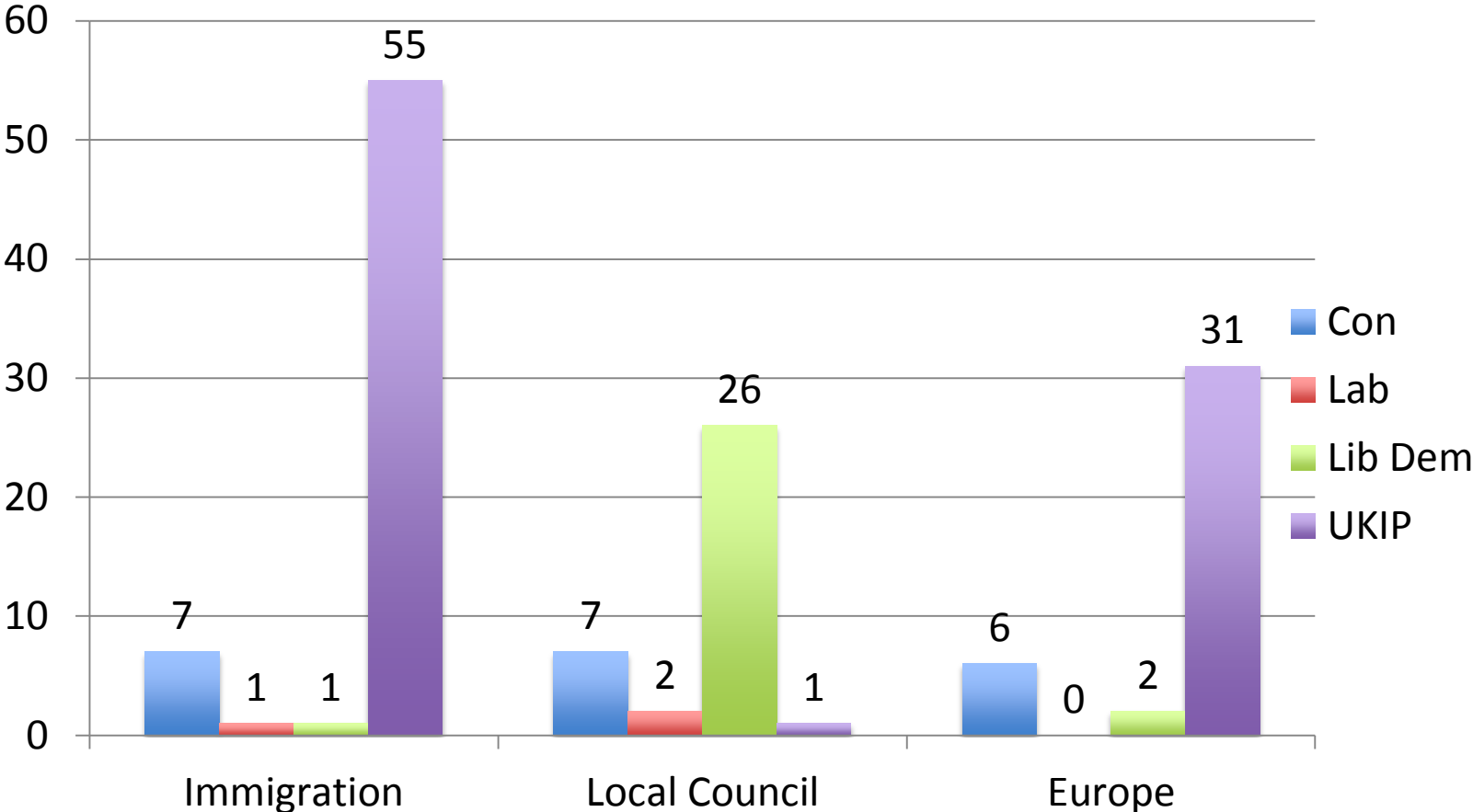
Source: ComRes

Satisfaction with Cameron



Source: Ipsos MORI

Top Motivators in Eastleigh



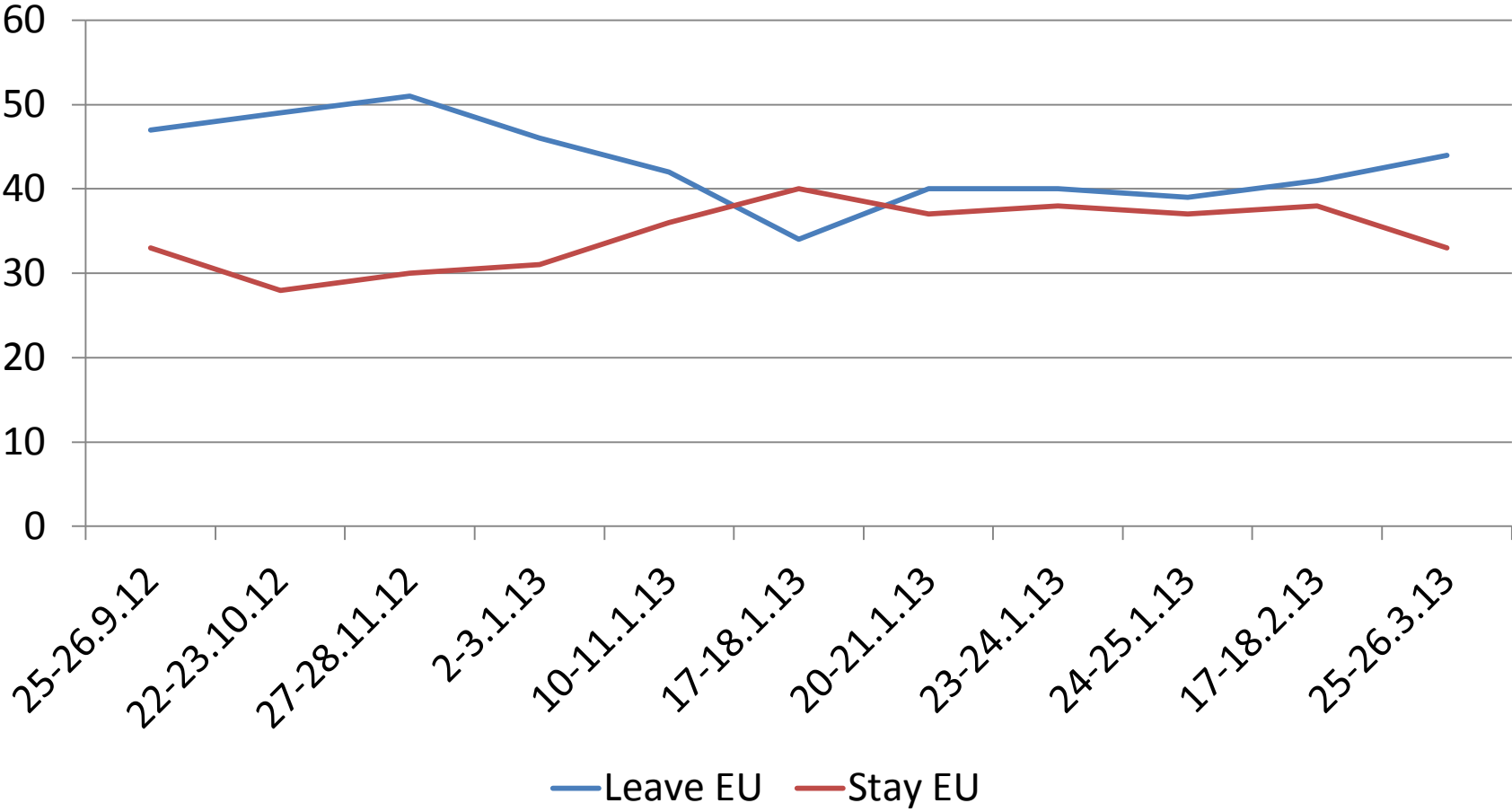
Source: Lord Ashcroft

Best Parties Nationally

% saying 'Other' best party on	All Voters	UKIP Voters
Europe	17	78
Asylum/Immigration	16	78
Law & Order	7	49
Taxation	6	41
Economy in general	6	40
Unemployment	6	40
Education	6	37
NHS	5	37

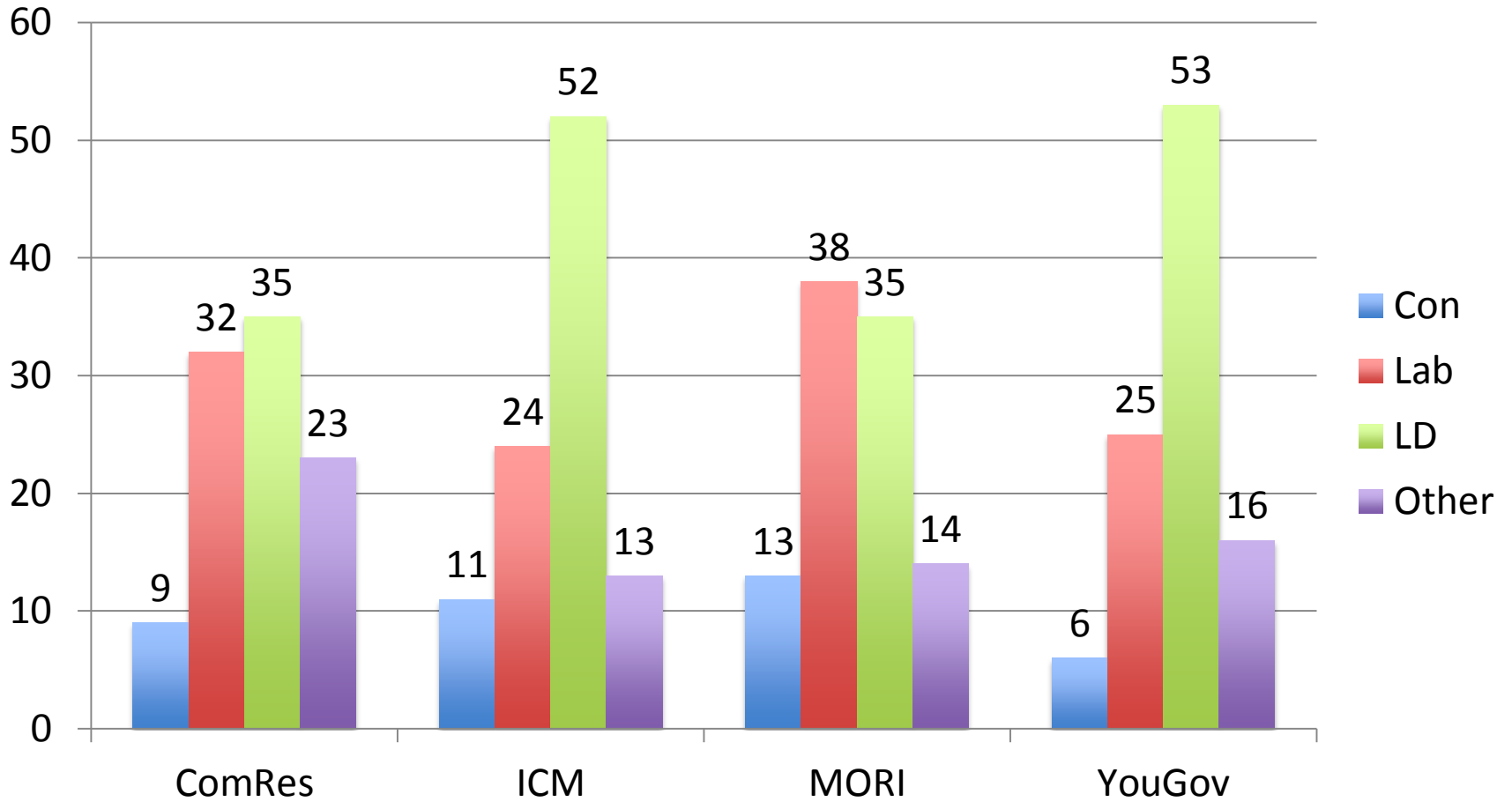
Source: YouGov 24-25 Mar

Cameron's (Short-Term?) Impact

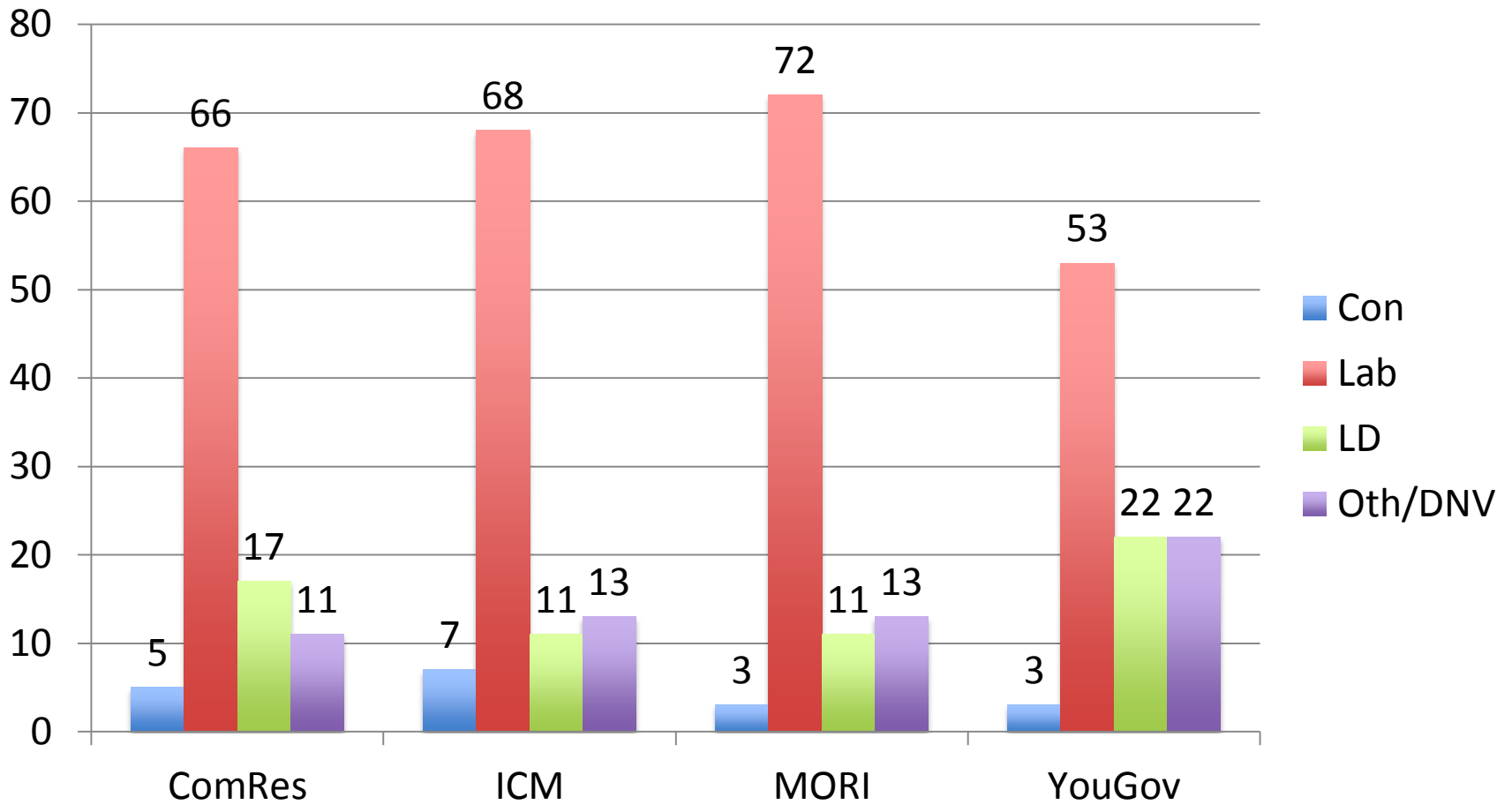


Source: YouGov

Lib Dems (still) losing to Labour

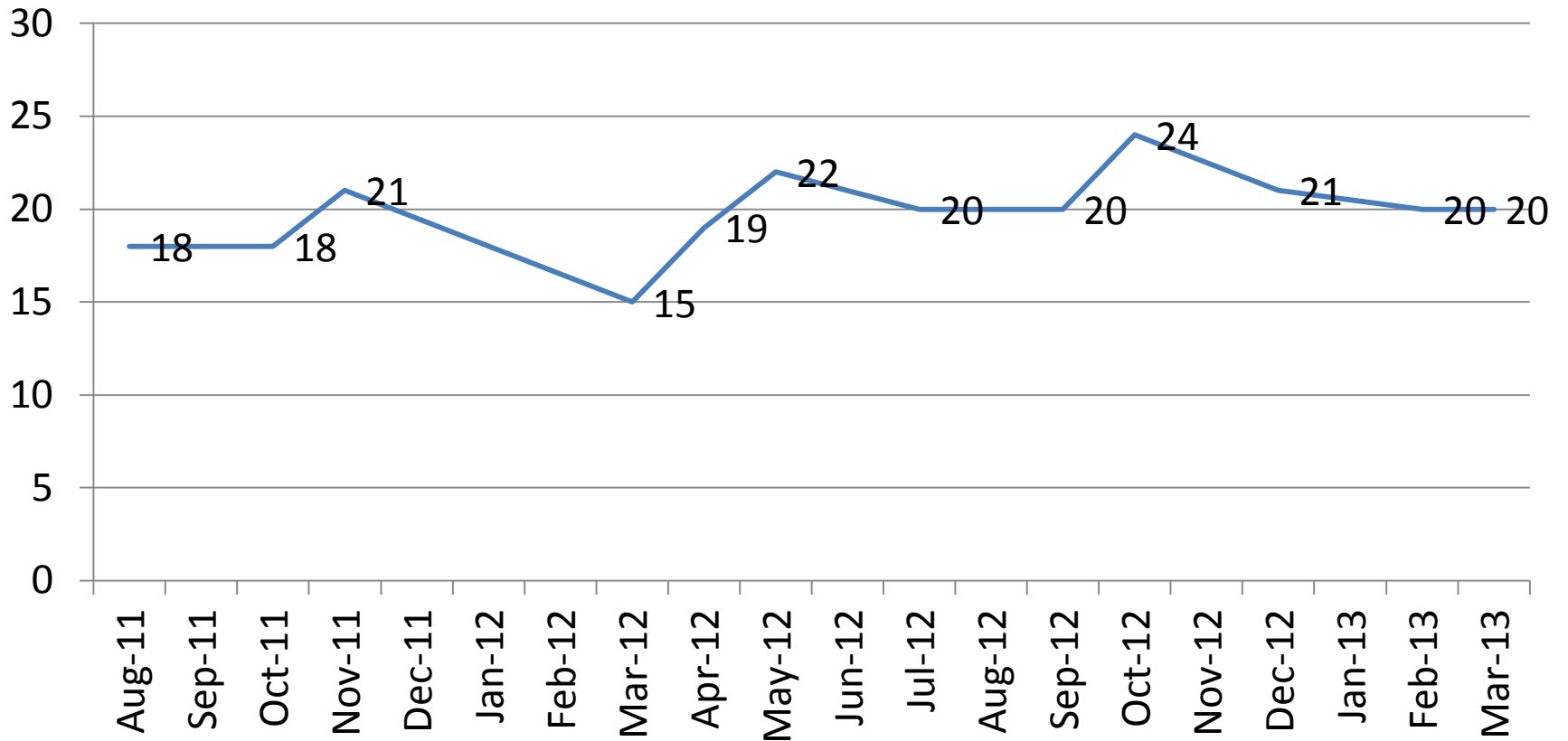


Sources of Lab Support



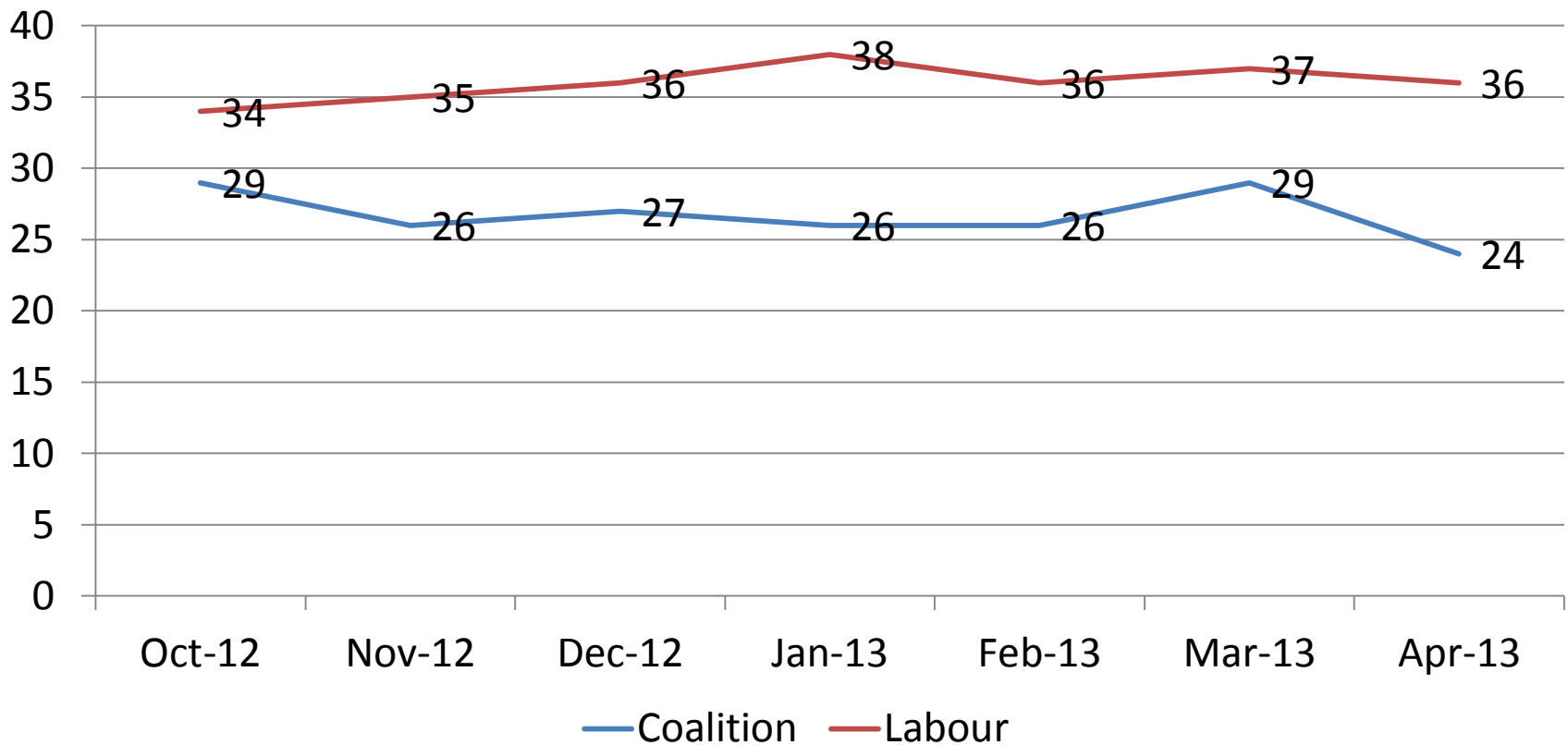
Labour Still to Convince on Economy

Trust Miliband/Balls to run economy

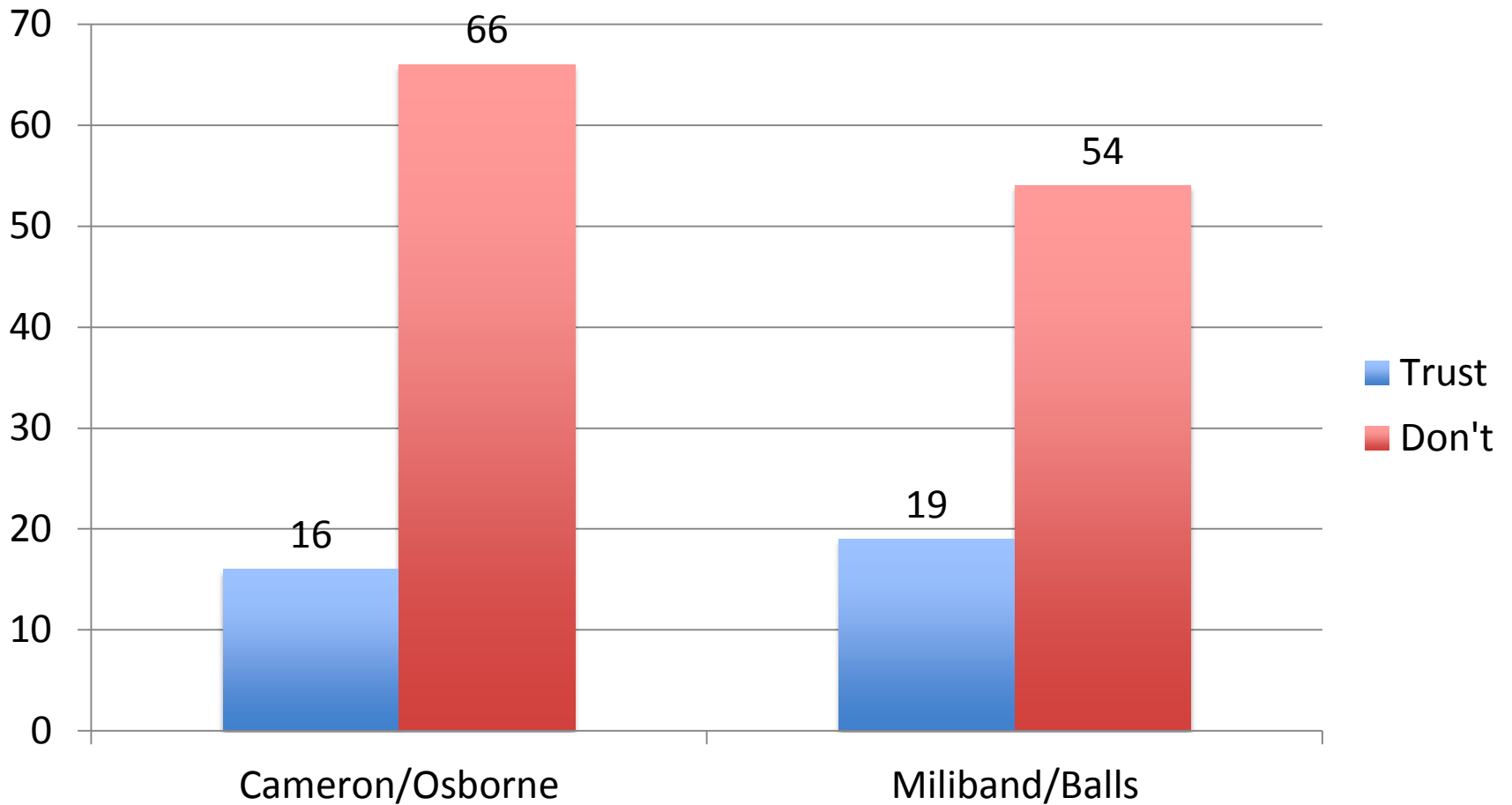


Or to Avoid the Blame

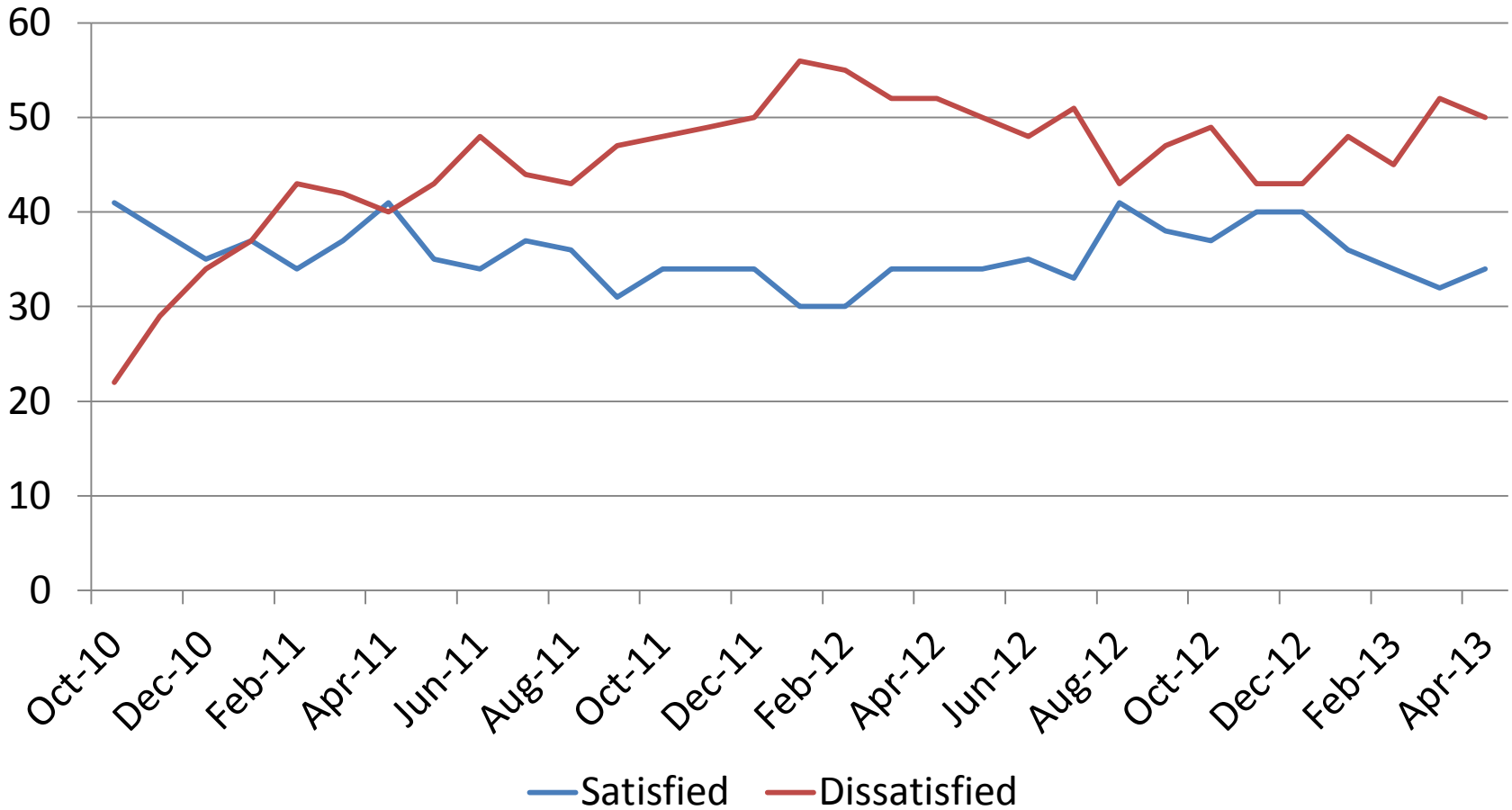
Most to blame for spending cuts



Though 2010 Lib Dem voters...

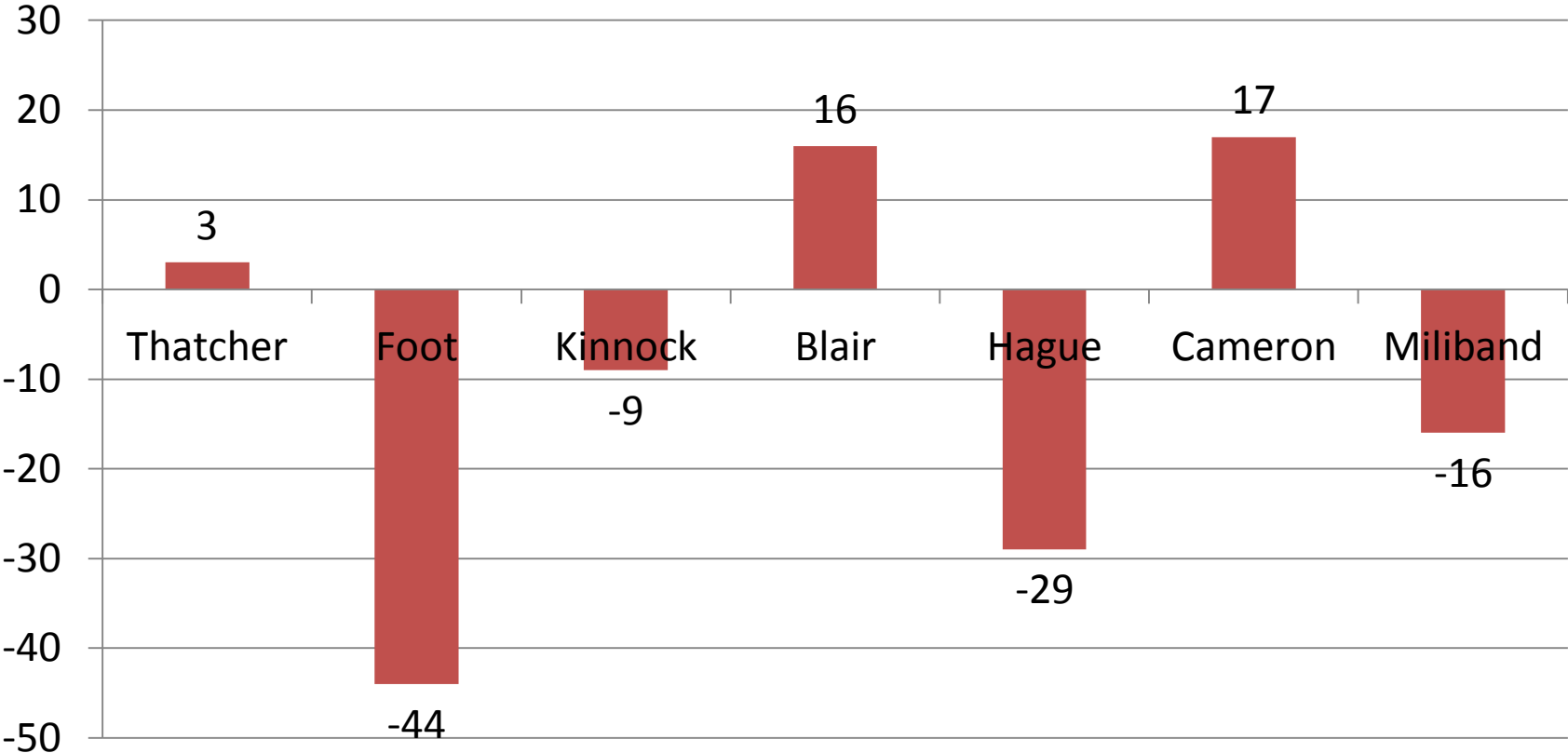


Miliband's Rating



How Miliband Compares

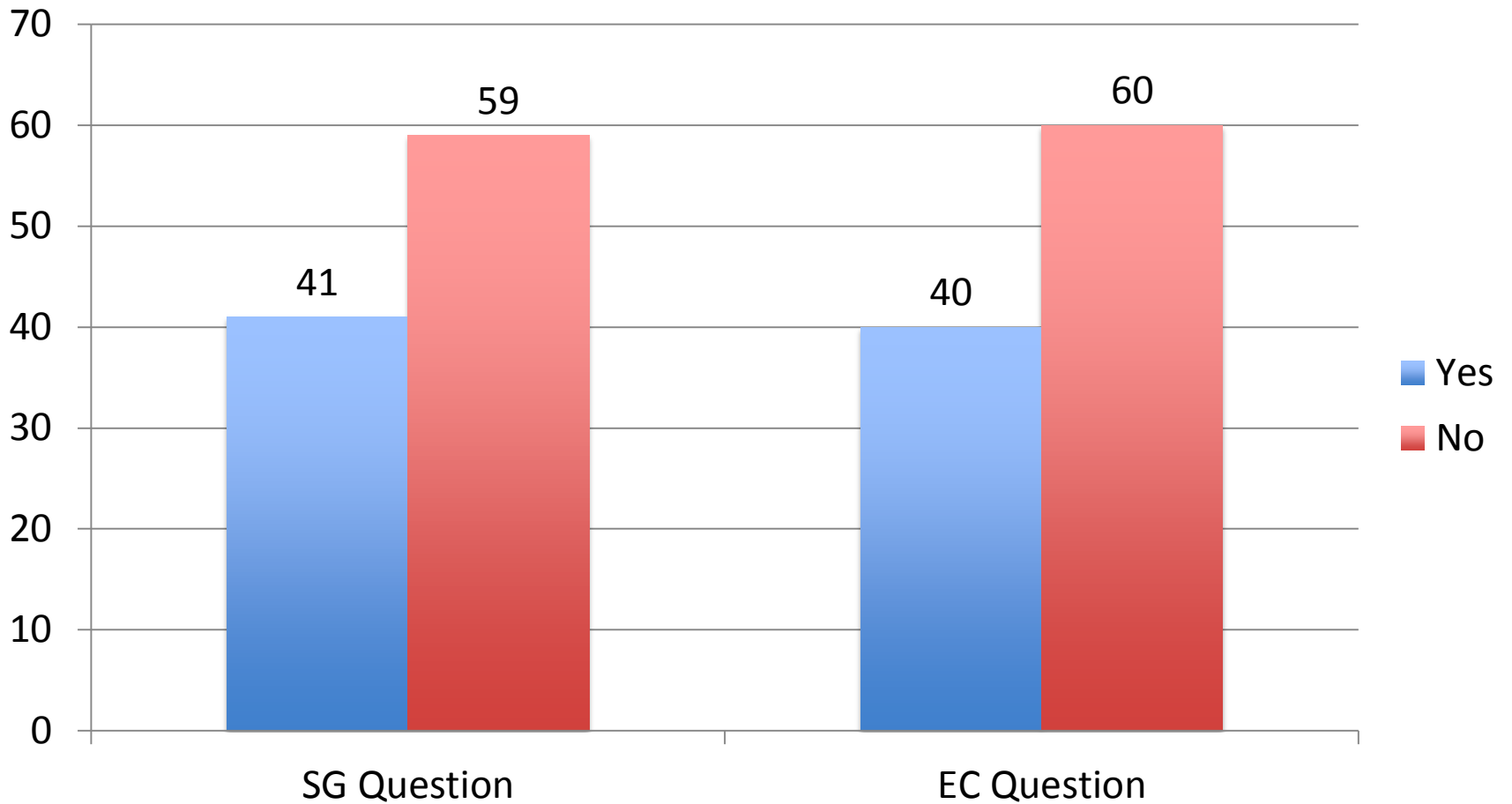
Net Satisfaction



Labour's Boundary Bonus

Lib Dem Share	10%	15%	20%	24%
% lead Lab need for maj.				
New Boundaries	2.9	3.9	4.2	4.7
Old Boundaries	0.3	0.9	2.0	2.7
% lead Con need for maj				
New Boundaries	2.7	3.1	5.1	7.1
Old Boundaries	5.9	6.9	9.5	11.2

Scotland – Referendum Polls Summary



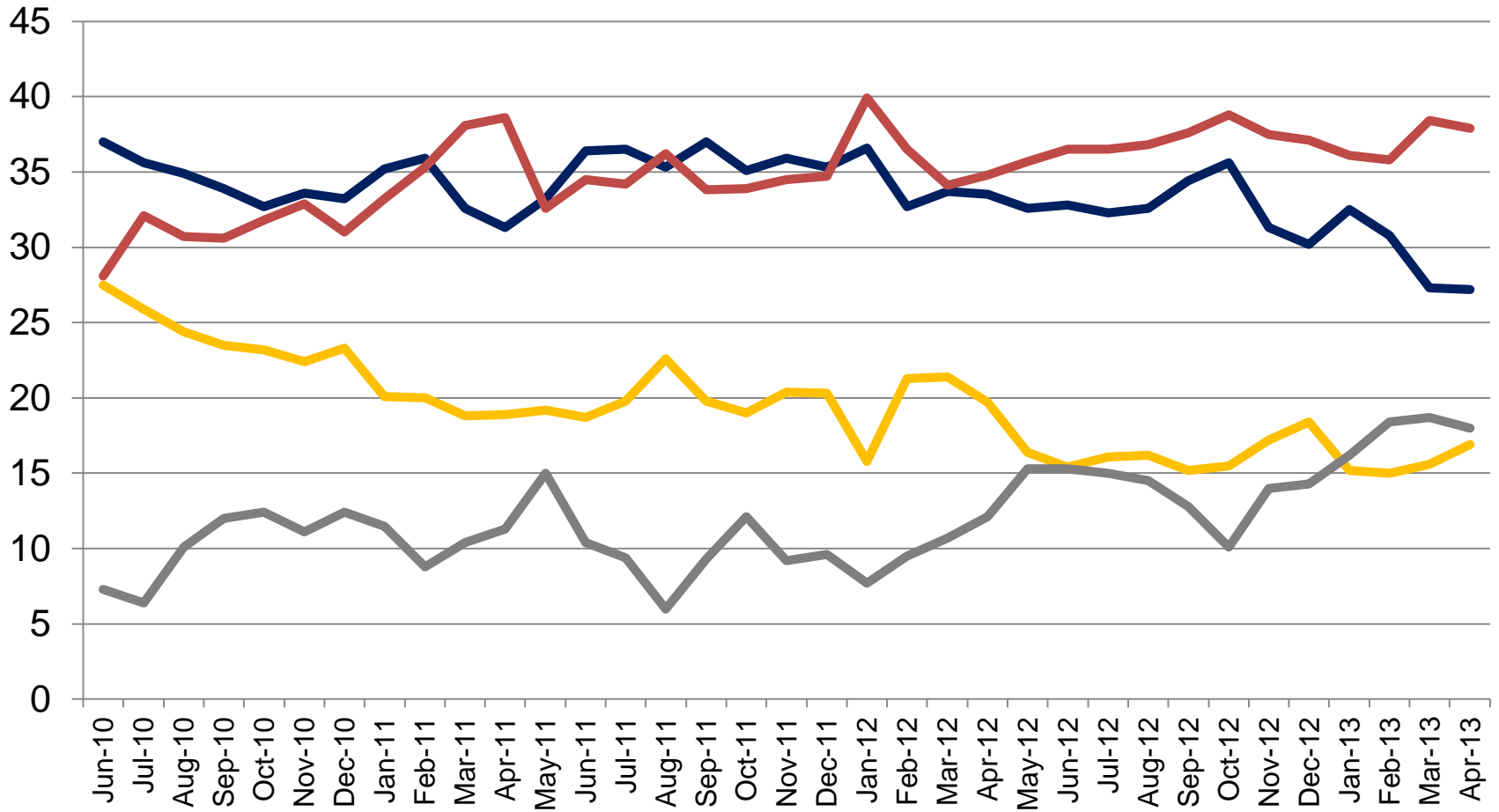
Conclusions

- There are currently two key battles in British (English) politics
 - Labour vs. Lib Dems
 - UKIP vs Conservatives
- Labour are best placed for 2015 – but far from invulnerable if protesting Lib Dems think again
- To overcome UKIP, Con need to regain own economic competence, not just fret about Europe

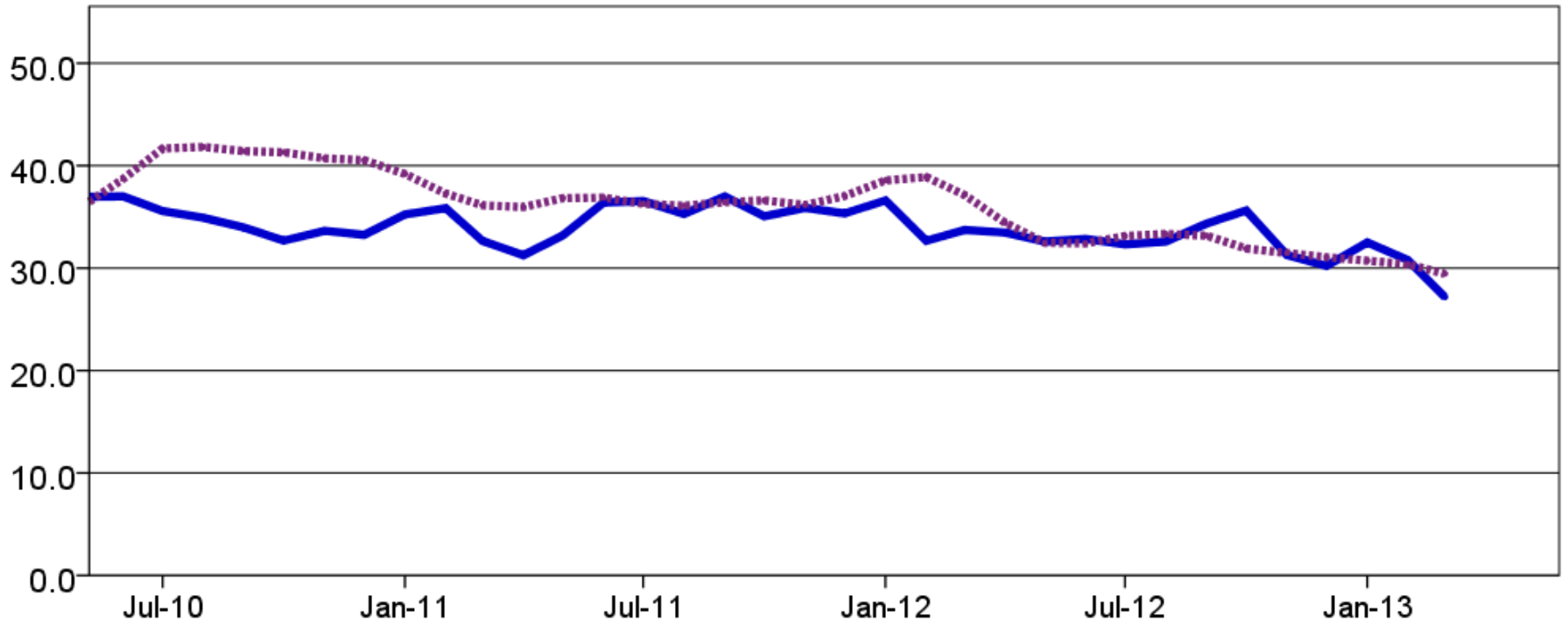
English Local Elections 2013

Colin Rallings & Michael Thrasher
The Elections Centre
Plymouth University

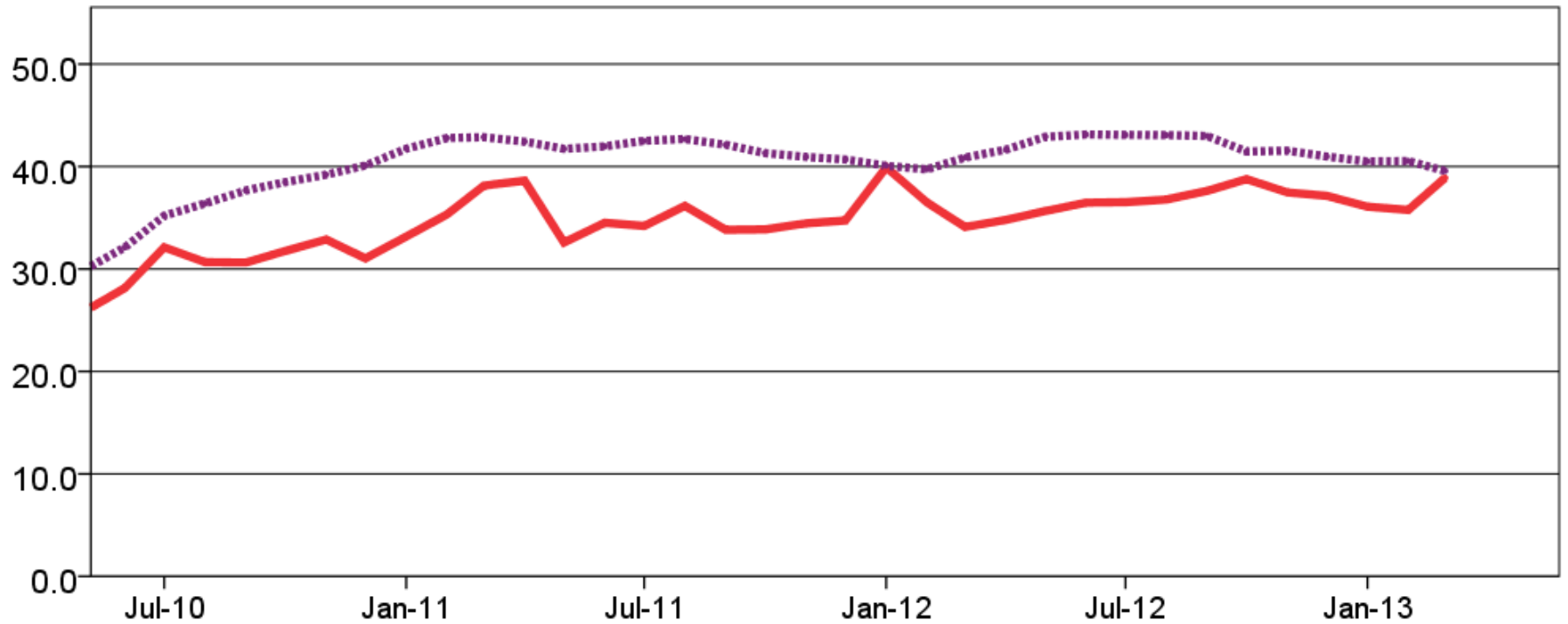
By-election model since 2010 general election



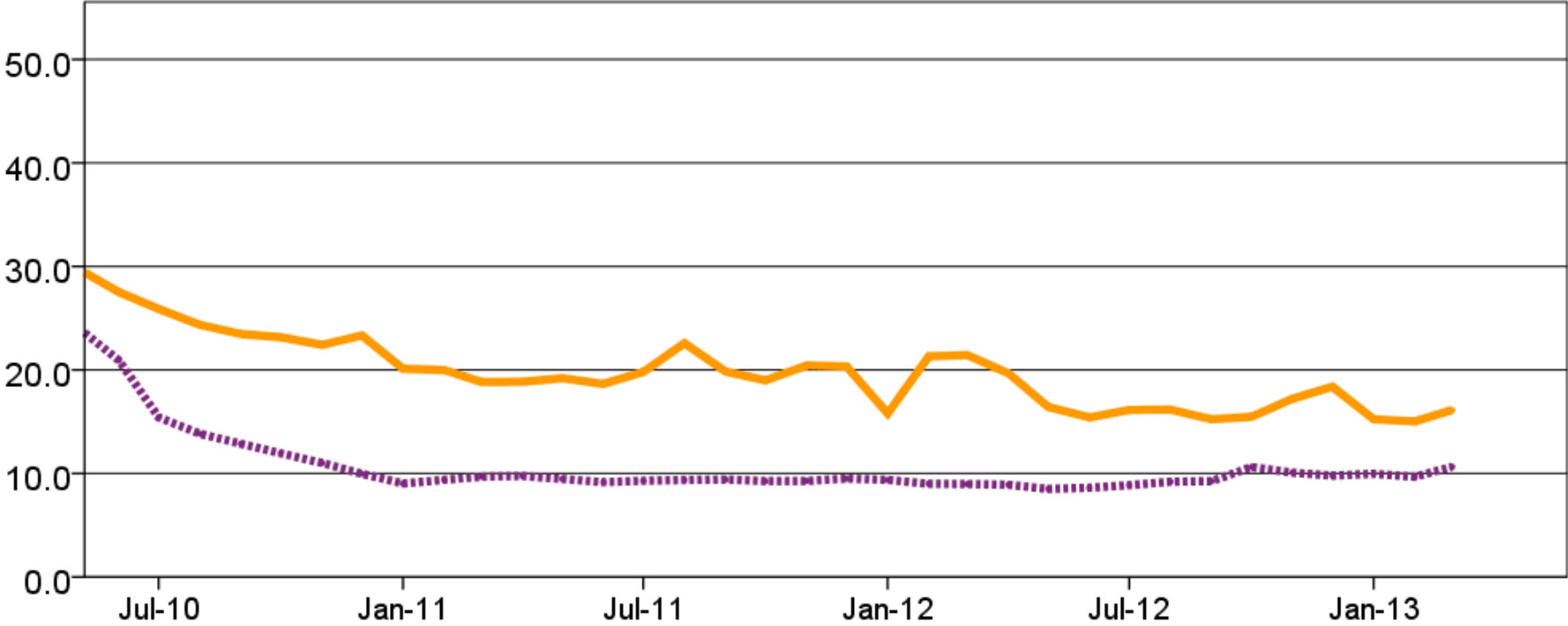
Conservative polls & by-elections



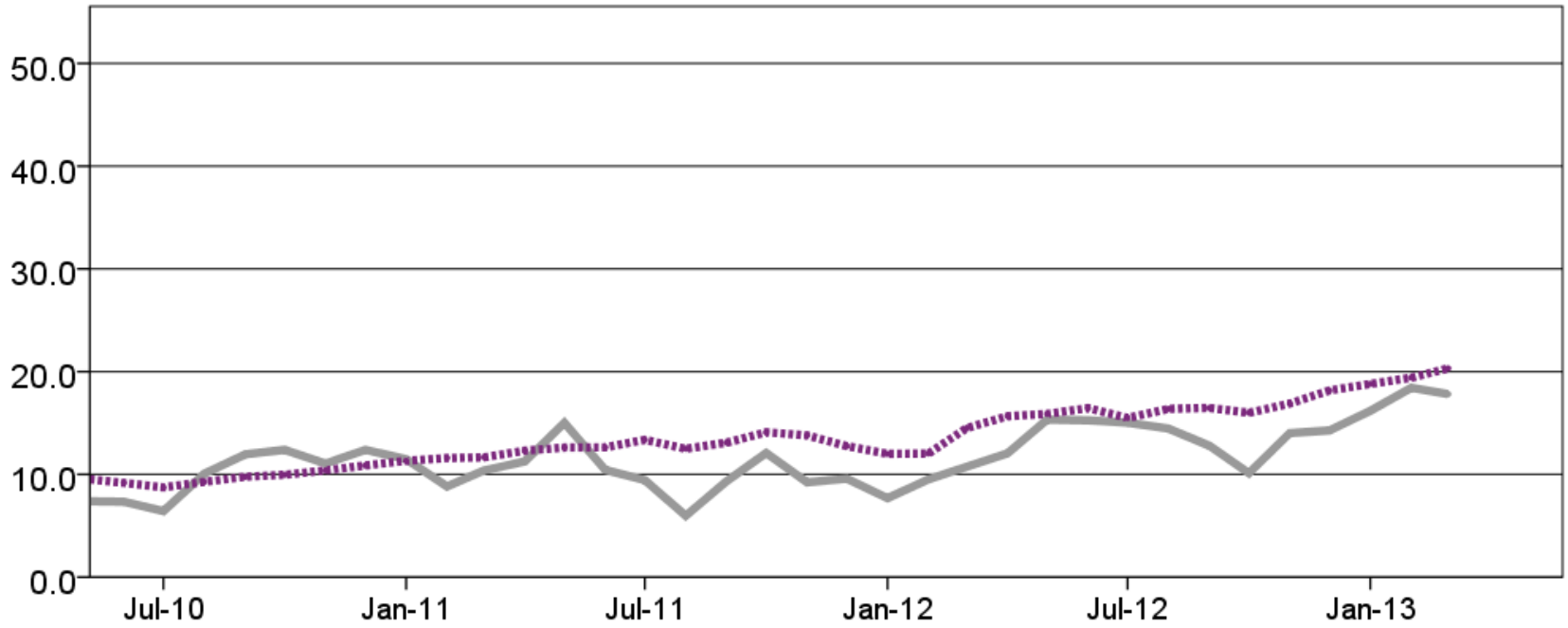
Labour polls & by-elections



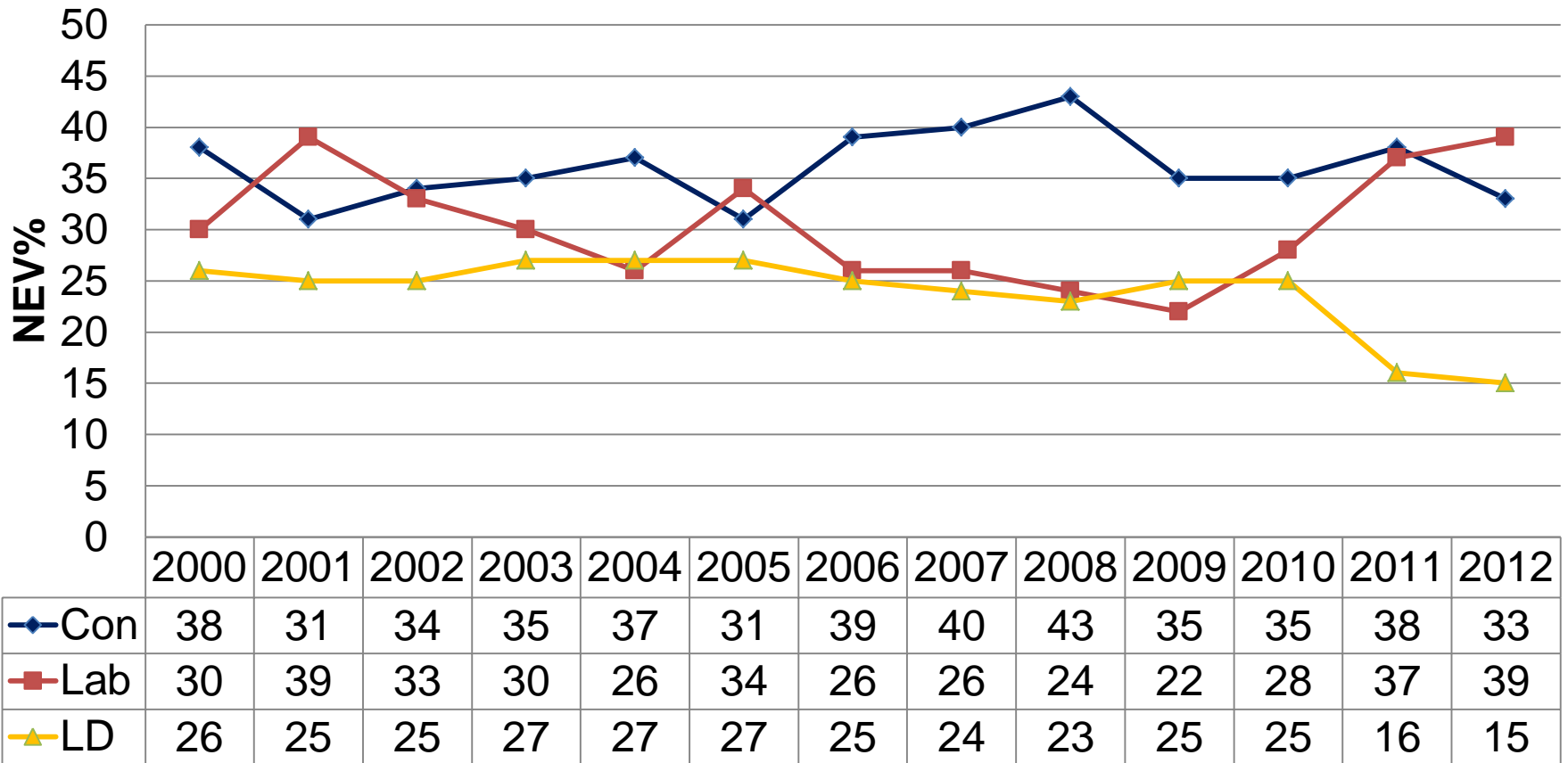
Liberal Democrat polls & by-elections



Other parties polls & by-elections

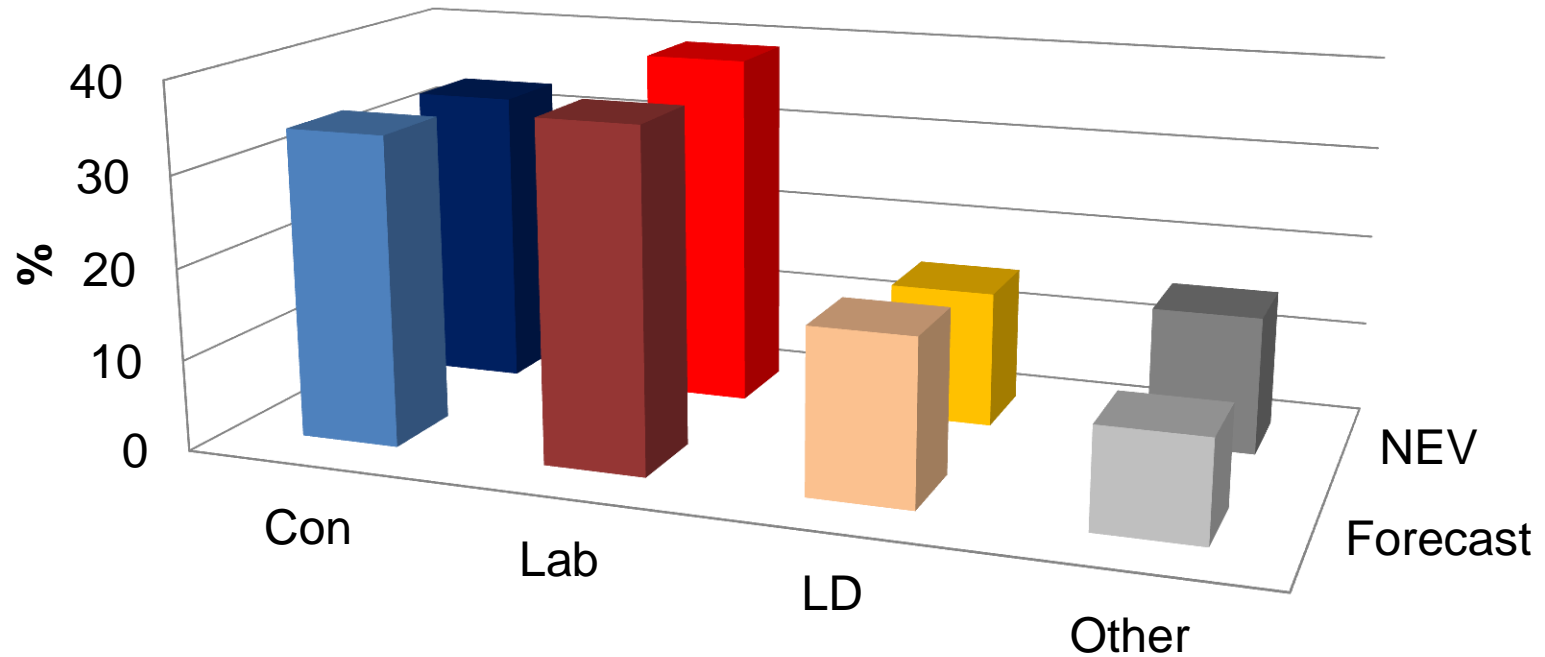


National equivalent vote 2000-12



Source: Rallings/Thrasher, The Sunday Times

Forecast & Actual 2012



	Con	Lab	LD	Other
Forecast	34	37	18	11
NEV	33	39	15	15

Councils up in 2013

	Con	Lab	LD	Other	NOC
Counties	26	-	-	-	1
Unitaries	3	1	-	-	3
...and Wales	-	-	-	1	-
Total	29	1	-	1	4

Seats up in 2013*

*calculations include boundary changes

	Con	Lab	LD	Other	
Counties	1228	148	333	102	
Unitaries	223	93	148	87	
...and Wales	1	4	-	25	
Total	1452	245	481	214	2392

Impact of boundary changes

	Con	Lab	LD	Ind/Oth
2008/9 actual	484	155	196	96
2008/9 notional	451	158	181	94
Sum	-33	+3	-15	-2
Marginality of new seats unknown, but no <i>overall</i> change assumed				

Contestation 2005-13

Year	Con	Lab	LD	UKIP
2013	94.6%	90.7%	73.8%	72.9%
2009 (excl. Durham and Northumberland)	99.8%	85.9%	89.6%	24.7%
2005	97.0%	85.5%	89.2%	11.3%

Pattern of party competition 2013

	Con 2nd	Lab 2nd	LD 2nd
CON win 2008/9	-	280	770
LD win 2008/9	370	65	-

The UKIP factor

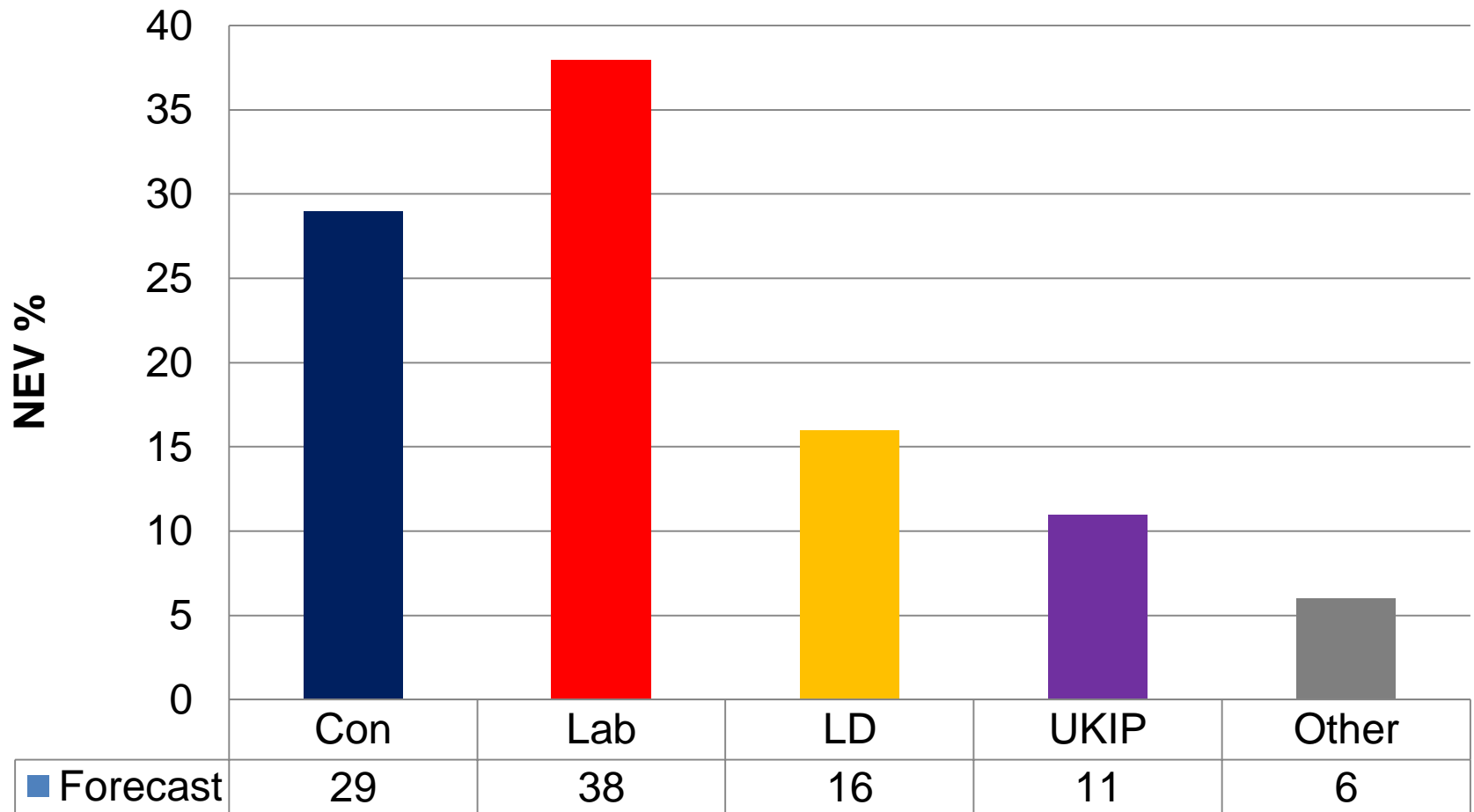
Year/Type	Contested %	Mean vote %	Change %
2009 Locals	25	16.0	-
2011 Locals	18	11.6	-
2012 by-elections	57	11.3	+7
2013 by-elections	60	18.2	+12.2

2008/9 Outcomes

	Con	Lab	LD	UKIP
2008 NEV	43	24	23	n/a
2009 NEV	35	22	25	10

Source: Rallings/Thrasher, The Sunday Times

By-election forecast 2013



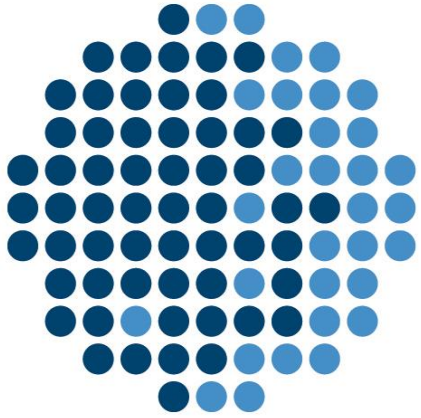
Source: Rallings & Thrasher, April 19th 2013

Possible seat changes 2013

Con	Lab	LD	UKIP	Oth
-310	+350	-130	+40	+50

Possible council changes 2013

Derbyshire	Lab ex Con
Gloucestershire	<i>NOC ex Con</i>
Lancashire	<i>Lab ex Con</i>
Nottinghamshire	Lab ex Con
Staffordshire	<i>NOC (Lab) ex Con</i>
Warwickshire	NOC ex Con



Political Studies Association

Slides will be sent out this
afternoon!