

# Political Studies Association

## The London Elections Media Briefing

Wednesday 23<sup>rd</sup> April

# London Borough Elections, 2014

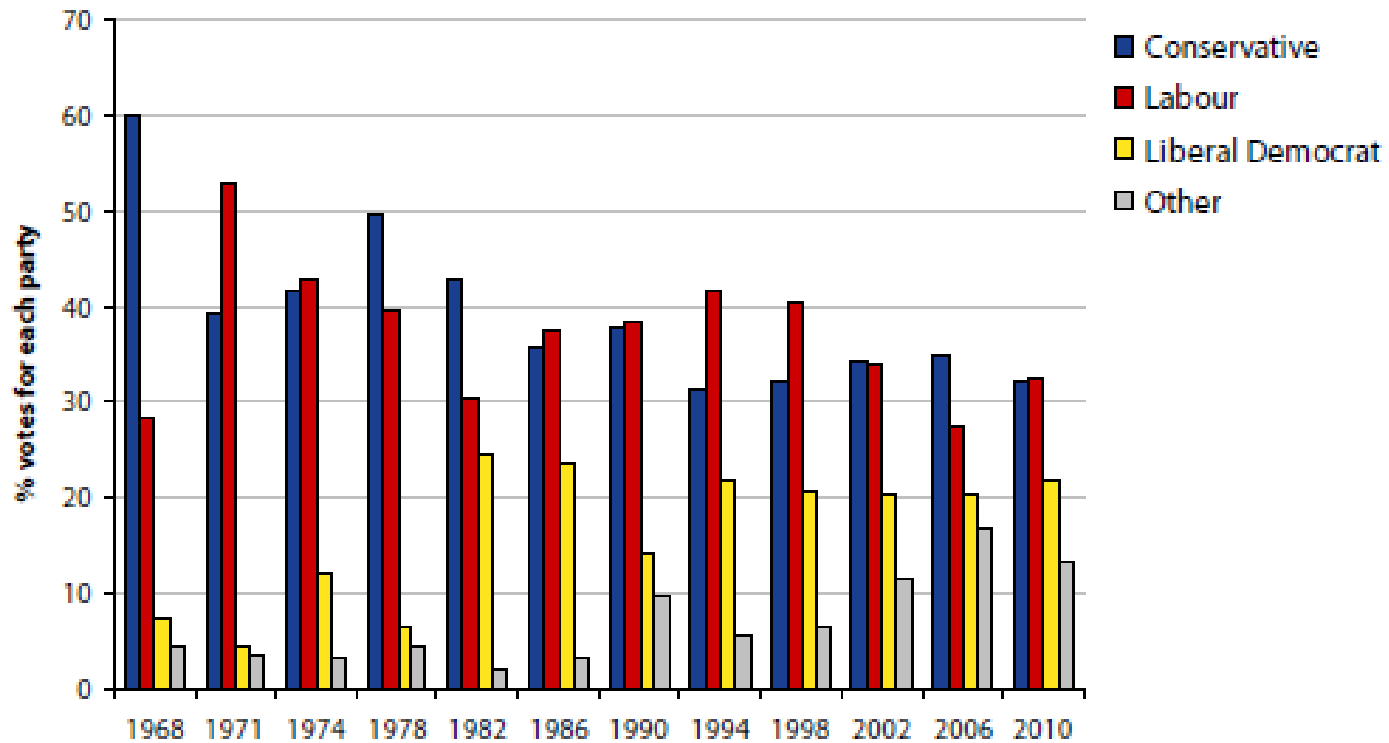
Tony Travers

London School of Economics

# London Government

- Greater London Authority
  - Mayor and Assembly
  - Elected last in 2012, next in 2016
  - Supplementary Vote (Mayor) and Additional Member System (Assembly)
- 32 boroughs
  - Elected last in 2010 (General Election day)
  - All-out elections every four years
  - First-past-the-post
  - Mayors in Hackney, Lewisham, Newham, Tower Hamlets
    - SV voting system
- The City of London
  - Elected last in 2013, next in 2017
  - Unique franchise, council and Lord Mayor

# Vote share, London borough elections



Source: GLA

# Councillors elected, London boroughs

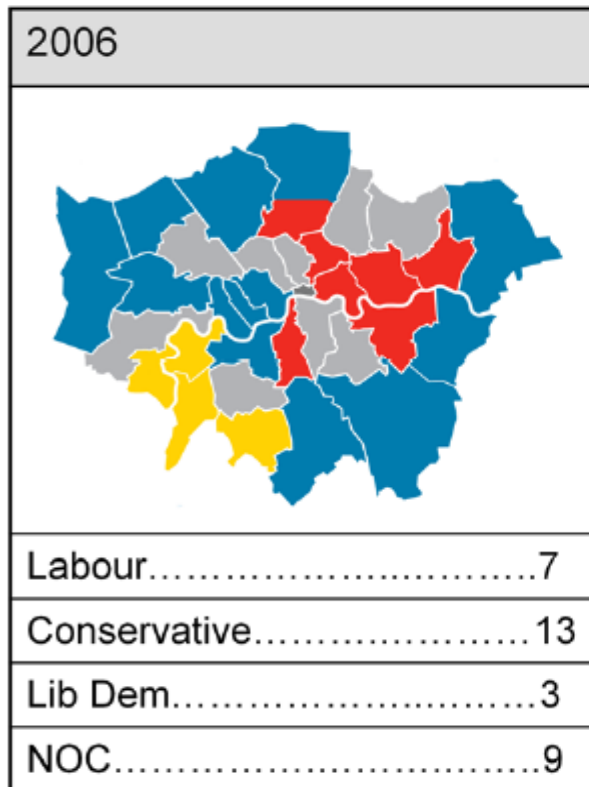
	CON	LAB	LD	other	total
6.5.10	717	875	246	23	1,861
4.5.06	785	684	317	75	1,861
2.5.02	653	866	309	33	1,861
7.5.98	538	1,050	301	28	1,917
5.5.94	519	1,044	323	31	1,917
3.5.90	731	925	229	29	1,914
8.5.86	685	957	249	23	1,914
6.5.82	980	781	124	29	1,914
4.5.78	960	882	30	36	1,908
4.5.74	713	1,090	27	37	1,867
13.5.71	597	1,221	9	36	1,863
9.5.68	1,438	350	10	65	1,863
7.5.64	668	1,112	13	66	1,859

# Changes in political control, 2010

Read vertically for 2006 political control  
Read horizontally for 2010 political control

	CON 2006	LAB 2006	LD 2006	NOC 2006
CON 2010	Barnet Bexley Bromley Croydon Hammersmith and Fulham Havering Hillingdon Kensington and Chelsea Wandsworth Westminster		Richmond upon Thames	
LAB 2010	Ealing Enfield Harrow	Barking and Dagenham Greenwich Hackney Haringey Lambeth Newham Tower Hamlets		Brent Camden Hounslow Islington Lewisham Southwark Waltham Forest
LD 2010			Kingston upon Thames Sutton	
NOC 2010	Redbridge			Merton

# London borough control, 2006 and 2010



# 'Safe' boroughs

## Labour

Barking & Dagenham, Camden, Greenwich, Hackney, Haringey, Islington, Lambeth, Lewisham, Newham, Southwark, Waltham Forest

## Conservative

Bromley, Hillingdon, Kensington & Chelsea, Westminster, Wandsworth

## Liberal Democrat

Sutton



# More marginal – likely no change

## Labour

Brent, Ealing, Enfield, Hounslow

## Conservative

Hammersmith & Fulham, Bexley, Richmond, Barnet

# Marginal - possible change

(not predictions!)

Con to Lab?

Croydon, Redbridge

Con to NOC

Havering

Lab (Min) to Lab

Merton

Lab to NOC

Tower Hamlets

LD to Con

Kingston

NOC to NOC

Harrow

# Mayoral elections

Safe Labour?

Hackney

Lewisham

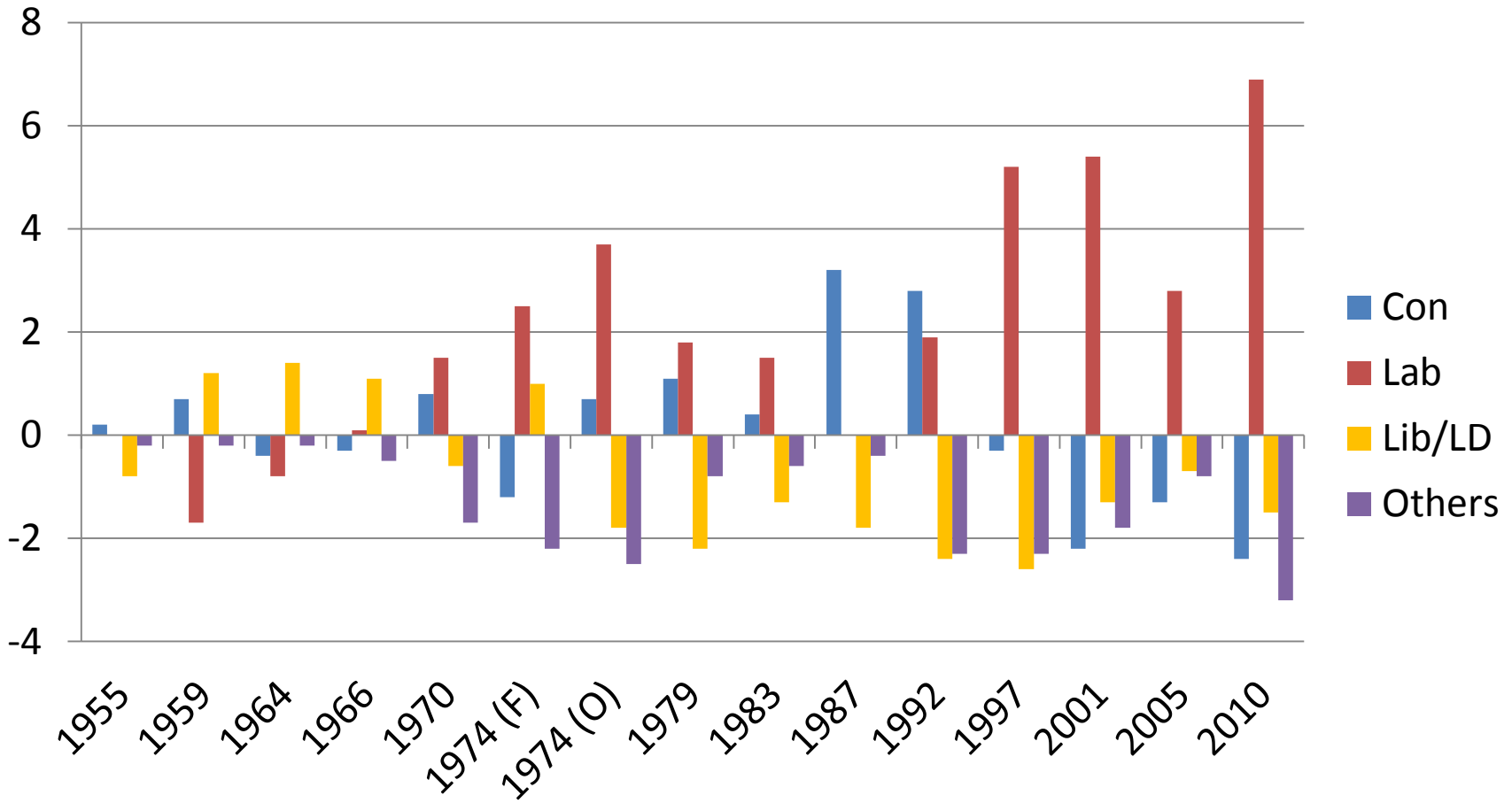
Newham

Independent vs Labour

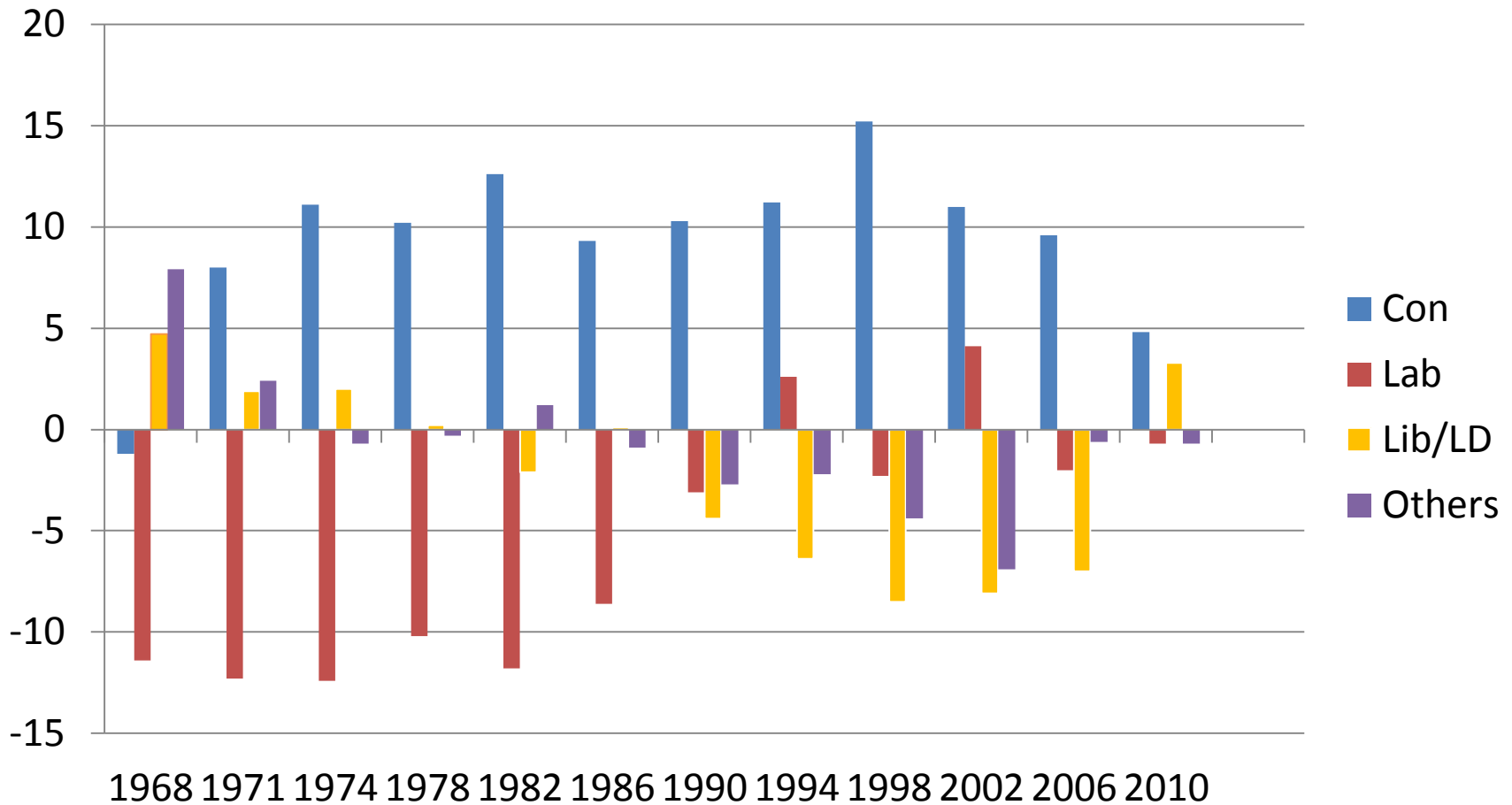
Tower Hamlets

- Lutfur Rahman (Ind) vs John Biggs (Lab)

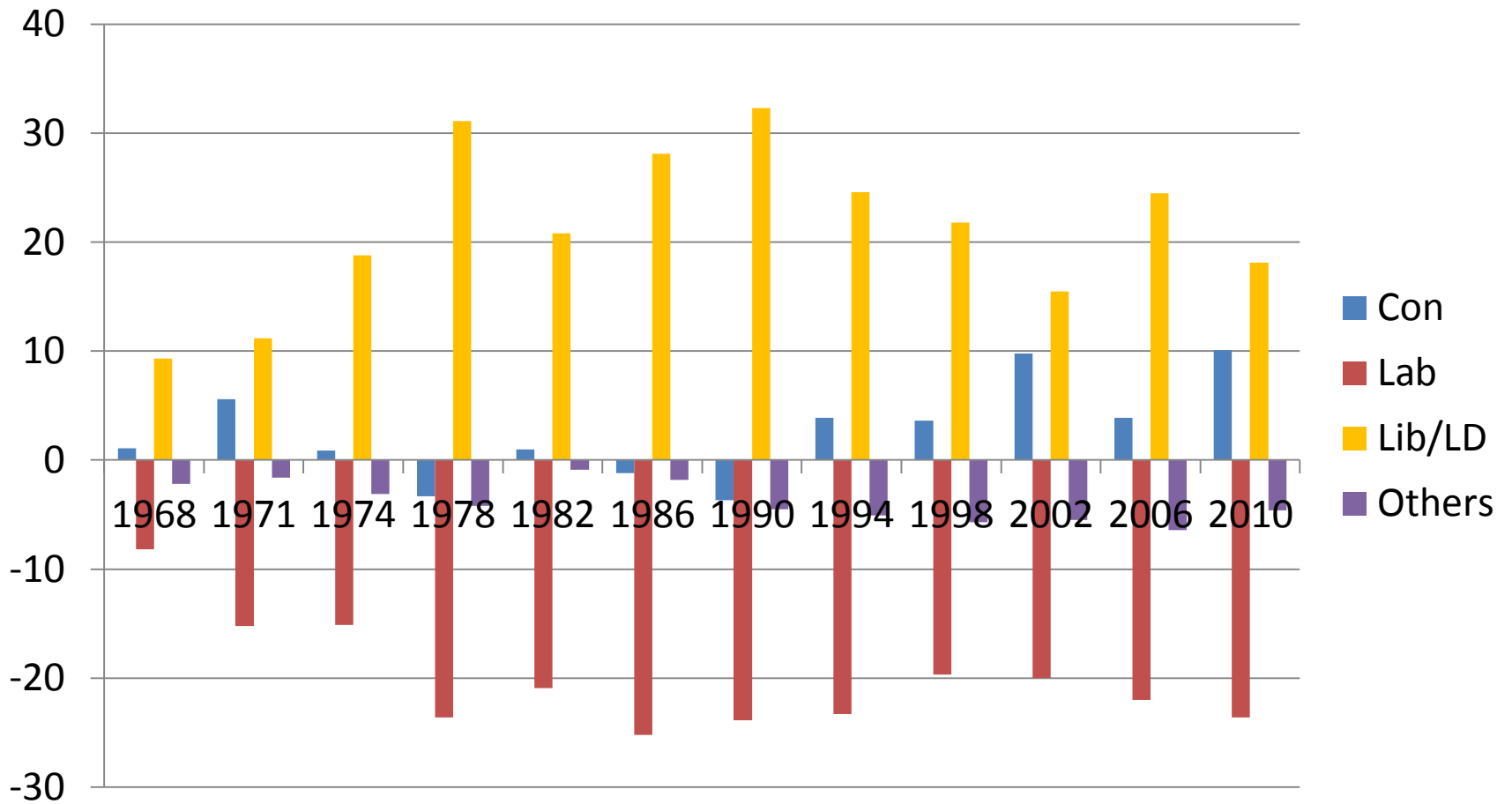
# Difference between London vote share and GB vote share, 1955-2010



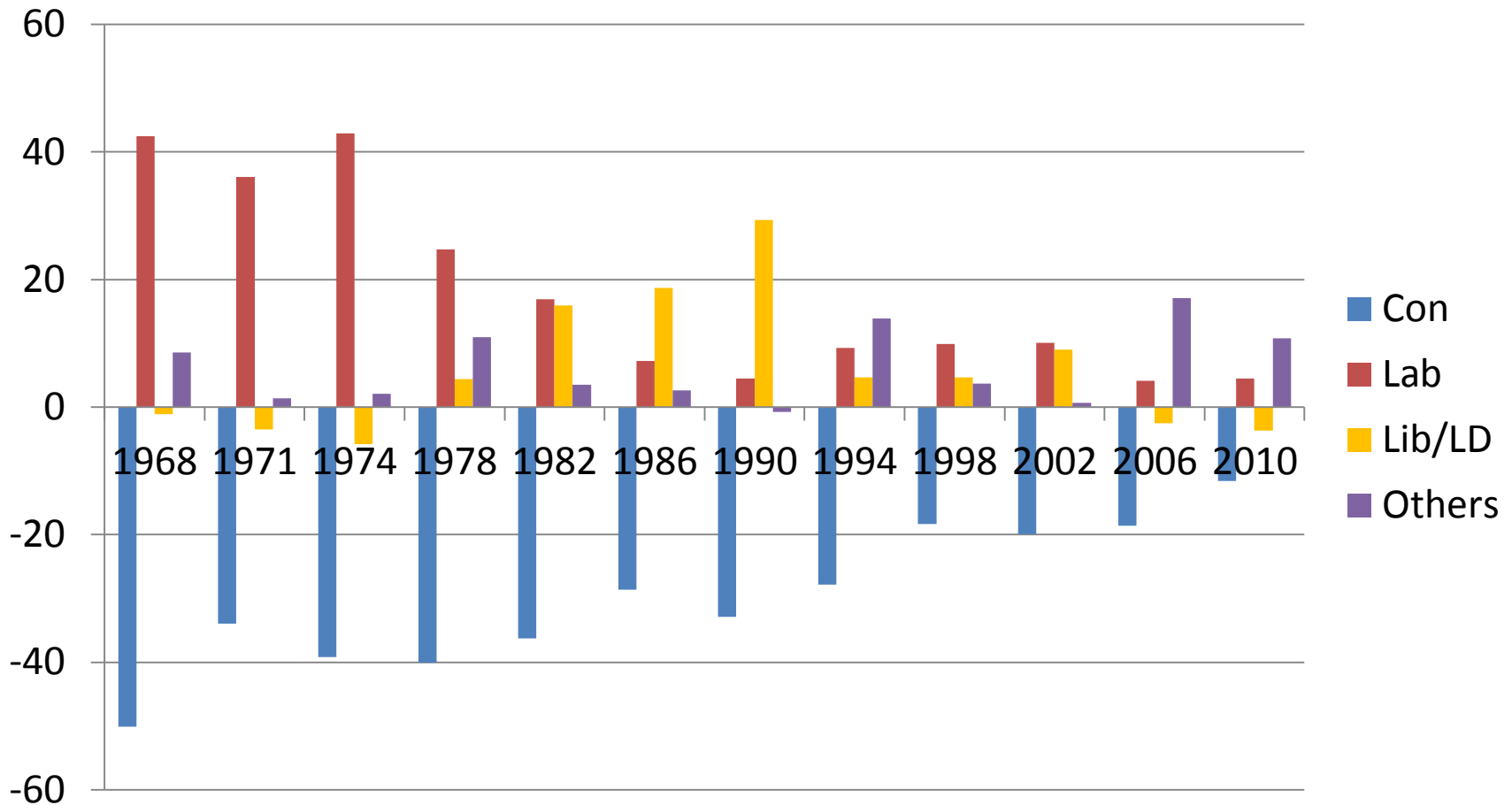
# Croydon vote share compared to London vote share – LB elections



# Richmond vote share compared to London vote share – LB elections



# Tower Hamlets vote share compared to London vote share – LB elections



# UKIP Voting

## Assembly, London-wide, 2012 (%)

Havering	11.8
Bexley	9.1
Sutton	8.2
Bromley	7.8
Barking & D	7.2
Hillingdon	6.3
Kingston	6.1
<b>London</b>	<b>4.5</b>



# London Borough Elections, 2014

Tony Travers

London School of Economics