



# Political Studies Association

## The State of the Parties Media Briefing

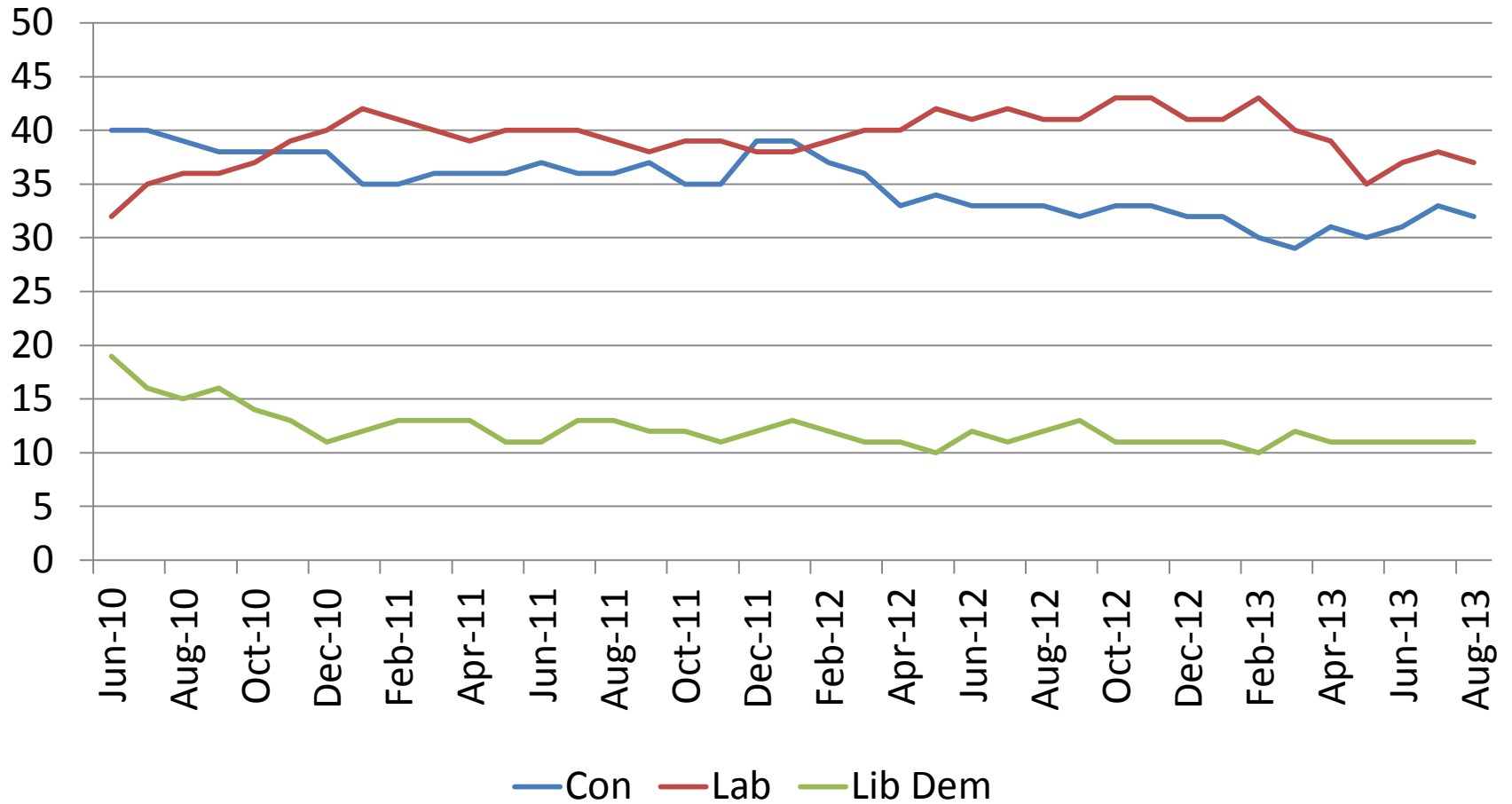
Wednesday 11<sup>th</sup> September

# The State of the Electoral Battle

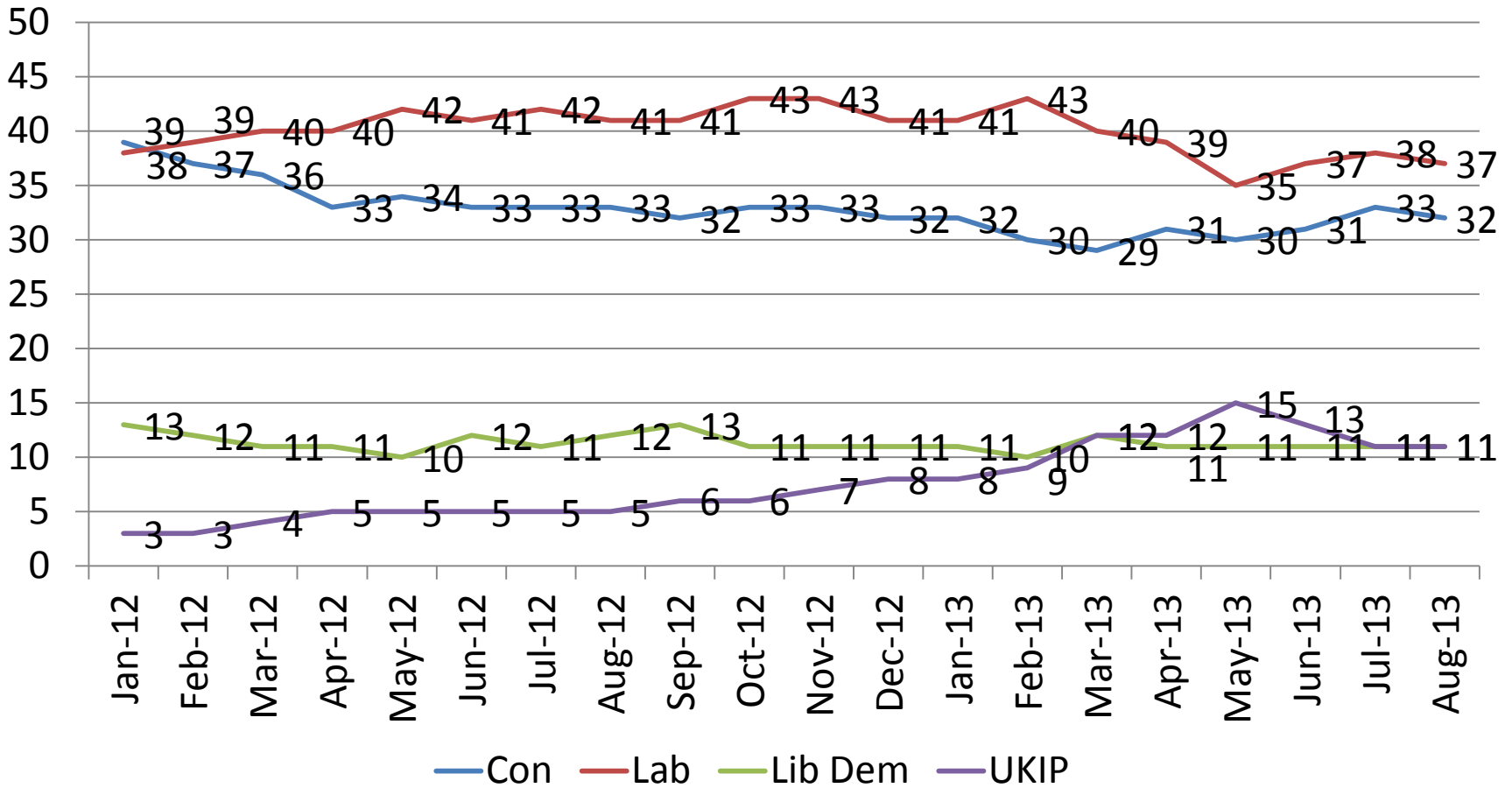
John Curtice

Strathclyde University

# Party Fortunes in This Parliament

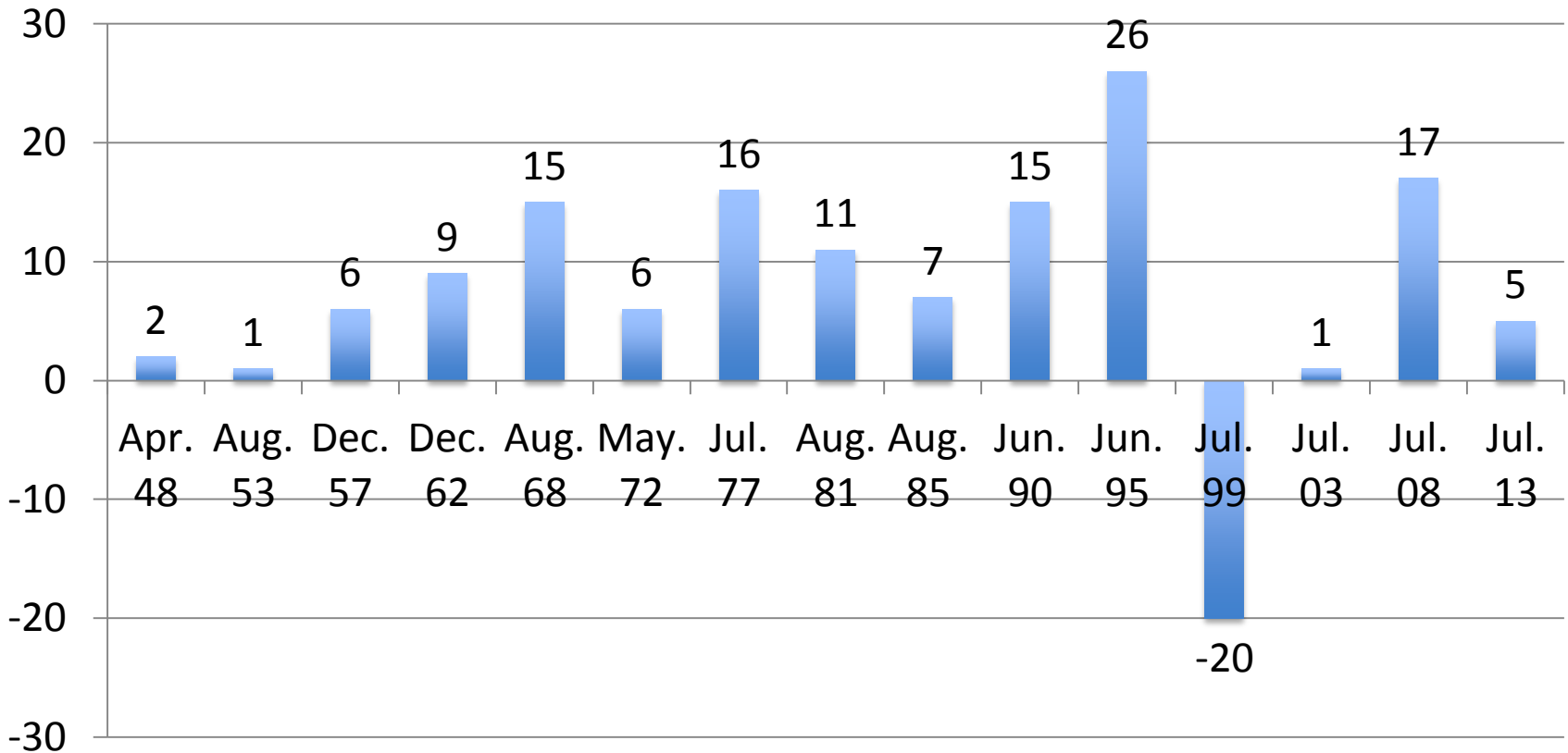


# The UKIP Intervention

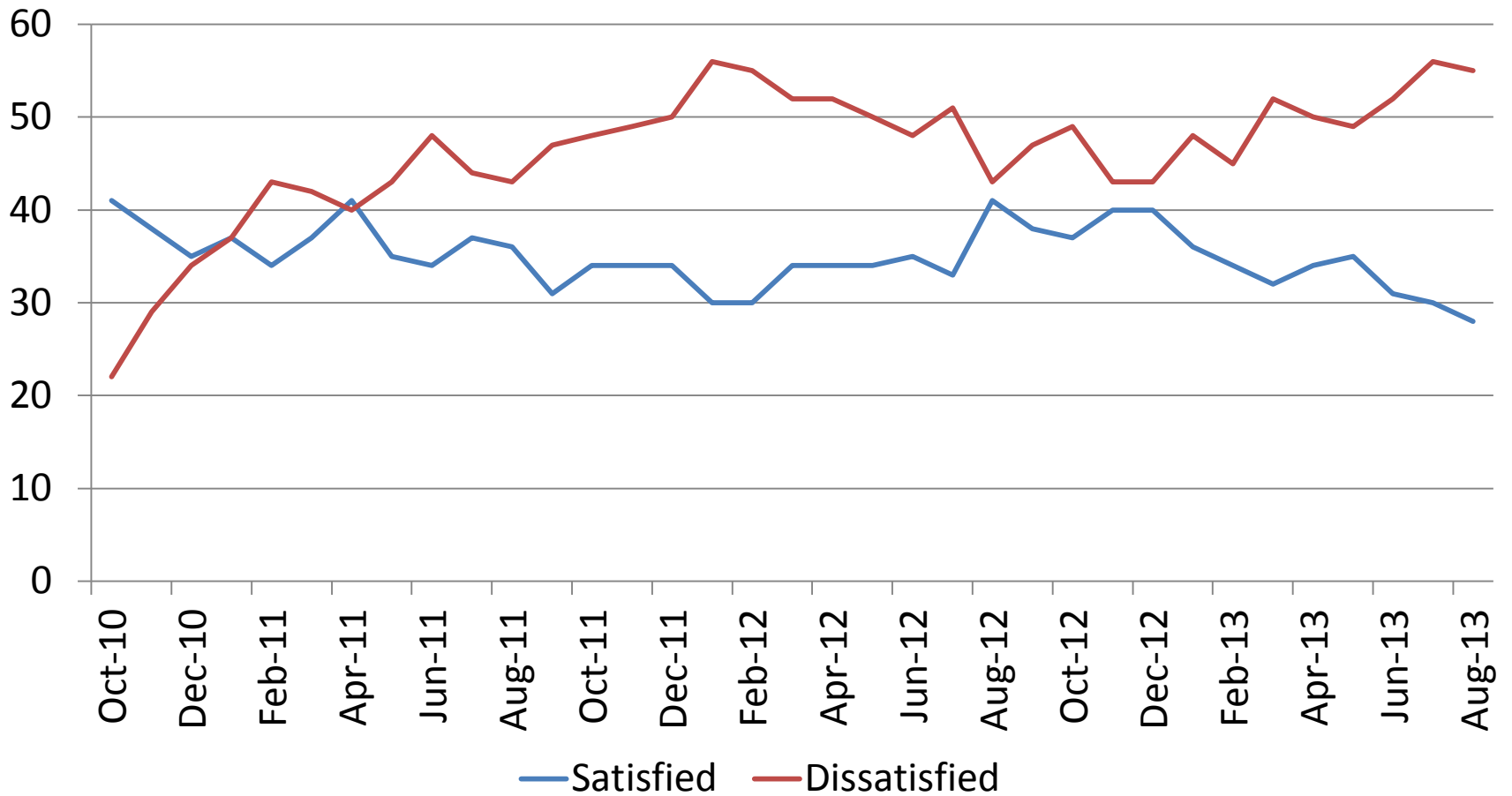


# Opposition Precedents

**% poll lead**

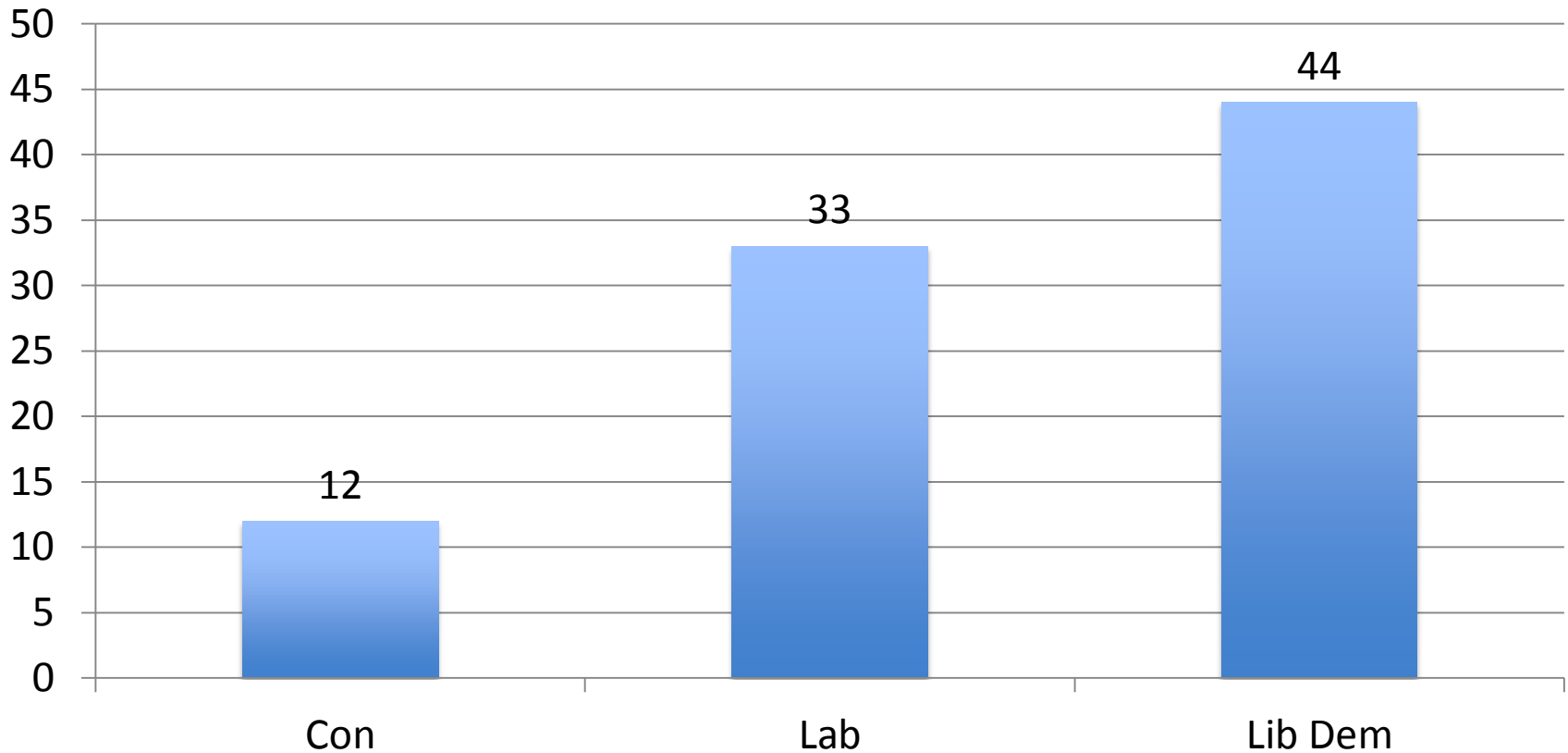


# Miliband's Rating



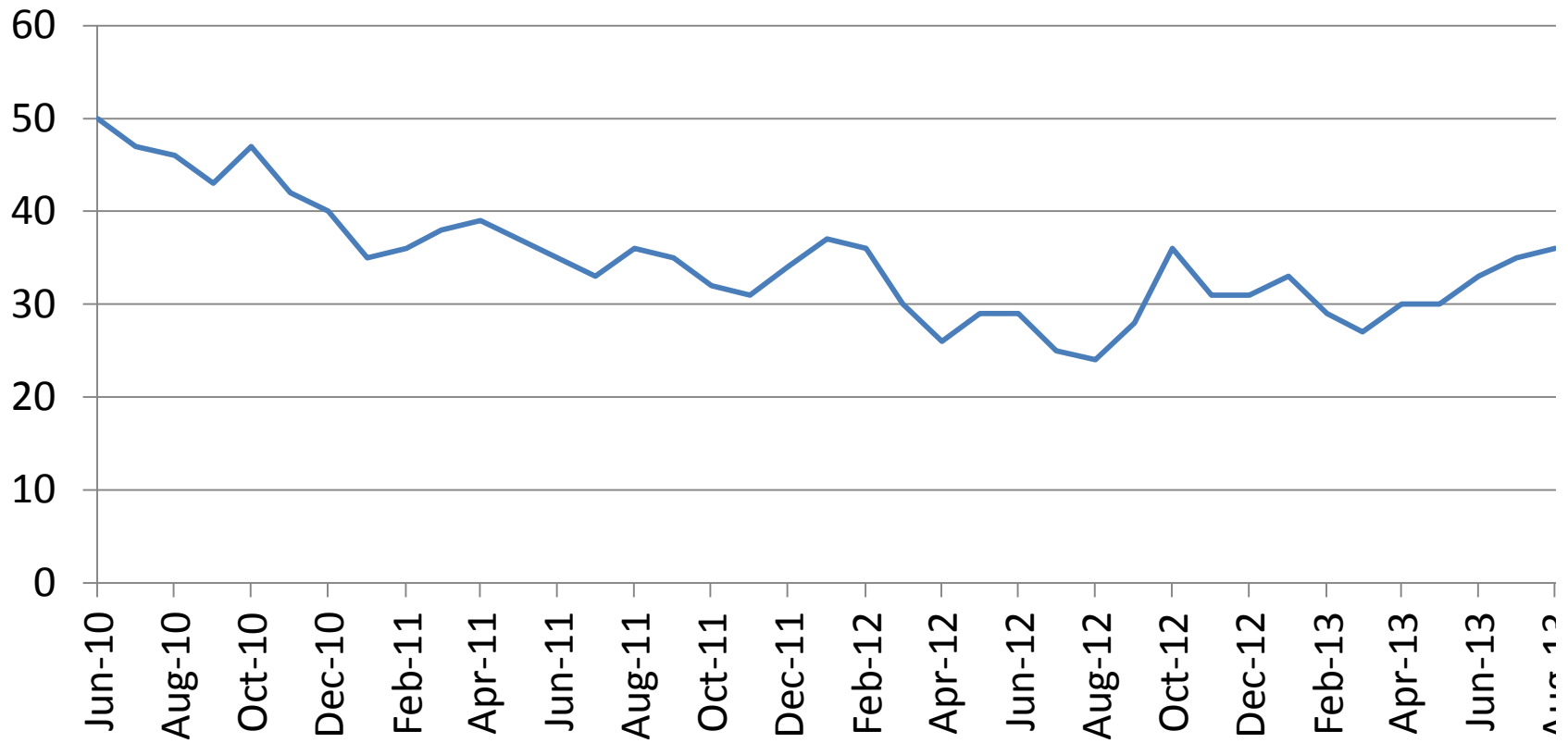
# Labour's Vital Crutch?

**% 2010 LD voters now supporting**



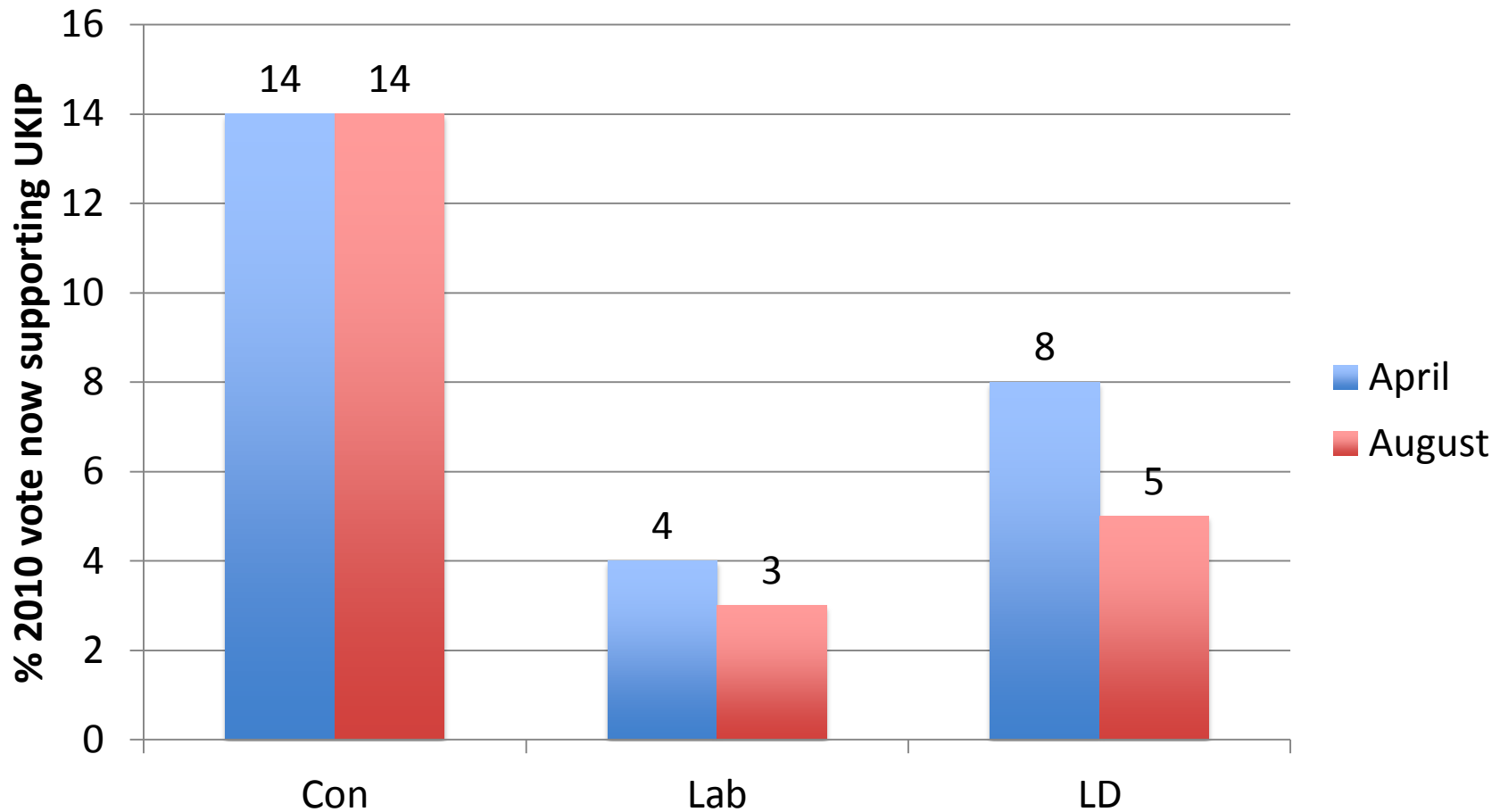
# Coalition Regaining Reputation for Economic Competence?

% managing economy well





# Tories Still Losing to UKIP



# State of the Parties

- Con – Economic confidence is recovering, but will this be enough to pull voters back from UKIP?
- Lab – On past precedent, too narrow a mid-term lead to be confident of victory.
- Lib Dems – still stuck in the same post tuition fee rut.
- UKIP – balloon has deflated a little, but is as yet far from burst.



Canolfan Llywodraethiant Cymru  
Wales Governance Centre

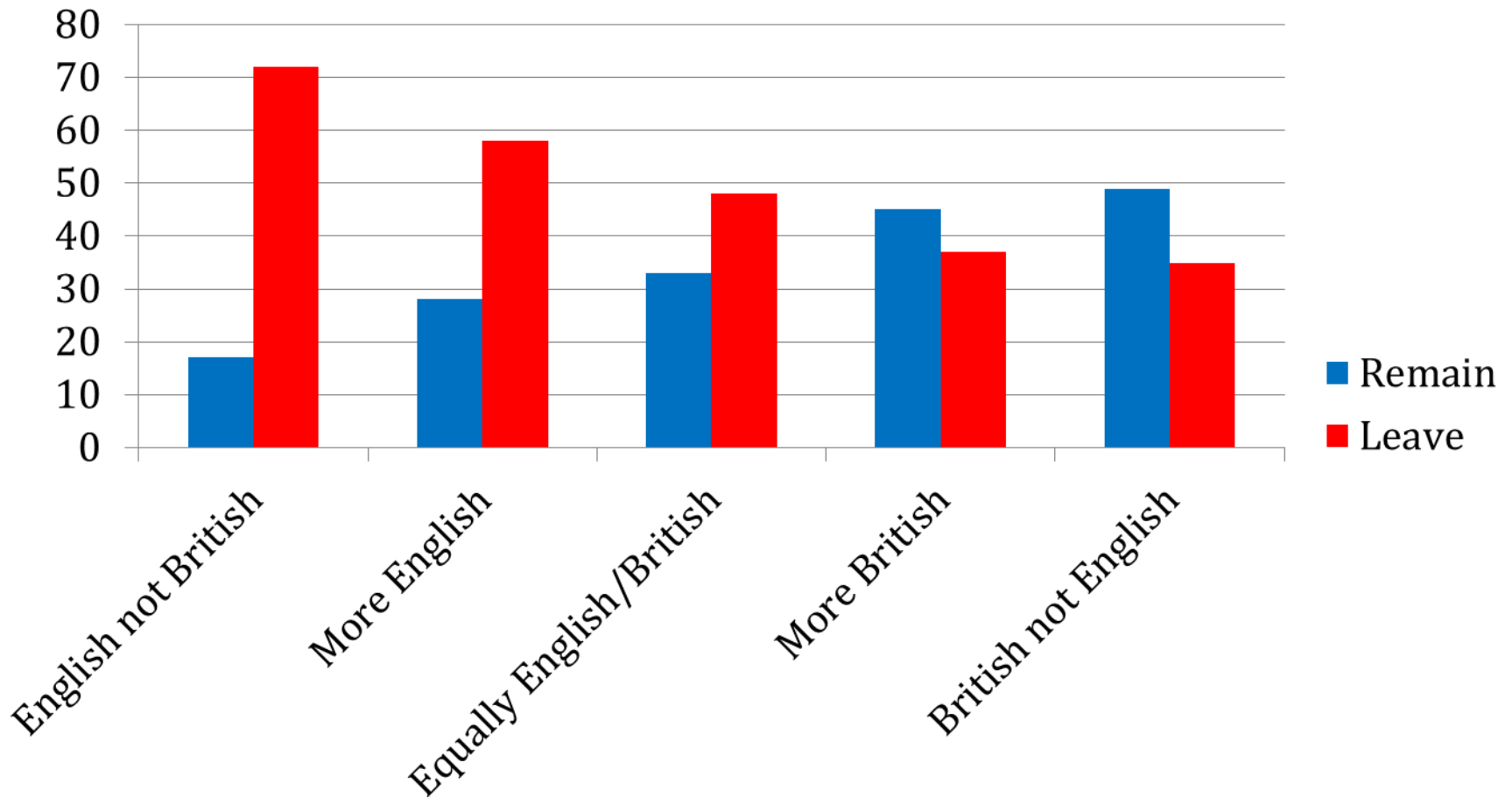


# **From British Euroscepticism to Euroscepticism in Britain**

Richard Wyn Jones

*Prifysgol Caerdydd/Cardiff University*

# EU referendum vote by Moreno NatID (2012)



# Which level of government HAS most influence over how England is run? (2012, %)

Local Councils	3
UK Government	55
European Union	31
Other/DK	10

- 2009 CANS survey in 14 European regions: in no region did EU score higher than 9% on 'most influence' question
- Perceptions of EU influence **strongly** correlated with hostility to EU: people think EU is important and don't like it!

# NatID by Party Support (2012, %)

